



Specifications

Medium temperature: -10°C to 180°C
 Pilot fluid temperature range: -10°C to 60°C
 Working pressure: 3 bar
 Maximum pilot pressure: 6 bar
 Pilot fluid: Filtered air
 Valve body material: SS304/316/316L
 Stuffing box housing material: SS304/316/316L
 Stem/Disc material: SS304
 Stuffing box packing: PTFE chevrons
 Wiper seal: FPM
 Disc seal: PTFE
 Valve body seal: PTFE

Product feature

2/2-way Angle-seat valve (Filling valve)
 Pneumatically operated, for medium up to +180°C,
 Stainless steel actuator dia 32mm Thread port DN 10-20

1. Compact style 2/2-way stainless steel valve;
2. Movable seat & V type seals ensure reliable and effective performance;
3. Single acting NC, single acting NO and double acting optional.

product mix

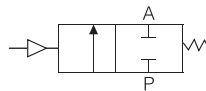
Series PV32S consists of 2-way direct acting pneumatic filling valve available in normally closed or normally open construction.

Built for specific applications, these valves come in a straight-through body design made of stainless steel.

Symbol

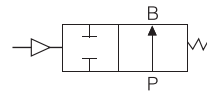
Control function A

(closed by spring force in rest position)



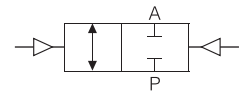
Control function B

(open in rest position)



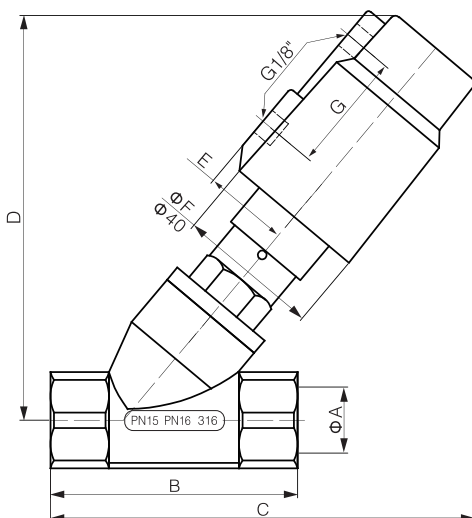
Control function I

(double-acting actuator)



1. High flow due to angled seat design;
2. Anti-waterhammer design (fluid entry under the disc);
3. Actuator rotatable through 360°;
4. Reliable performance, maintenance-free stuffing box.

Dimensions



32 mm Actuator							
Order code	Φ A	B	C	D	E	Φ F	G
PV32S010	3/8	54.5	93	110	24	40	34
PV32S015	1/2	68.5	119	113.5	24	40	34
PV32S020	3/4	77	129	130.5	24	40	34