

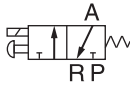


### Specifications

Model	3V1-M5	3V1-06
Fluid	Air(to be filtered by 40μm filter element)	
Acting	Direct acting	
Port size ①	M5	PT1/8
Valve type	3 port 2 position	
Lubrication	Not required	
Operating pressure	0~0.8MPa(0~114psi)	
Proof pressure	1.2MPa(175psi)	
Temperature ℃	-20~70	
Orifice size	Φ 1.2mm	
Material of body	Aluminum alloy	

① PT thread, G thread and NPT thread are available.

### Symbol



### Product feature

1. Direct acting type and normally closed mode, flexible in direction change.
2. No need to add oil for lubrication.
3. Several valves can be installed integrately to save installation space.
4. Affiliated manual devices are equipped to facilitate installation and debugging.
5. Several standard voltage grades are optional.

### Coil specifications

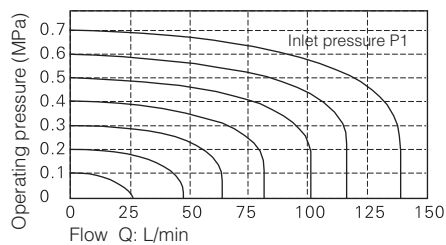
Item	specifications				
Standard voltage	AC220V	AC110V	AC24V	DC24V	DC12V
Scope of voltage	AC: ±15% DC: ±10%				
Power consumption	4.5VA	4.5VA	5.0VA	3.0W	3.0W
Protection	IP65(DIN40050)				
Temperature classification	B class				
Electrical entry	Terminal, Grommet				
Activating time	0.05 sec and below				
Max. frequency ①	10 cycle/sec				

① The maximum actuation frequency is in the no-load state.

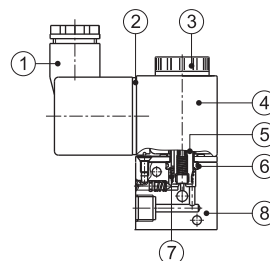
### Ordering code

Model	Code	Port size	Voltage	Electrical entry	Thread type
3V	1	M5	A	Blank	Port size
Solenoid valve (3/2 way)	1 Series	M5	AC220V	Terminal	Thread type
		06	B DC24V	I Grommet	1/8"
			C AC110V		G: G
			E AC24V		T: NPT
			F DC12V		M5
					Not this code

### Flow chart



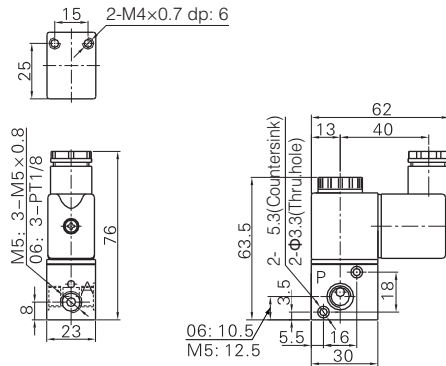
### Inner structure



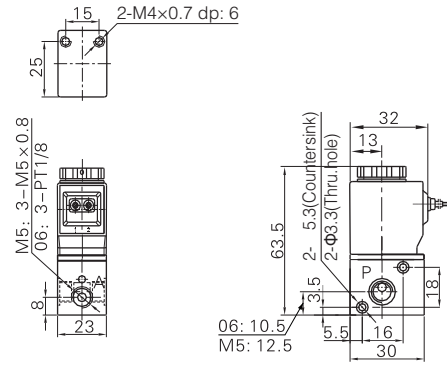
No.	Item	No.	Item
1	Connector	5	Armature
2	Gasket	6	O-ring
3	Coil nut	7	Return spring
4	Coil	8	Body

### Dimensions

#### Terminal

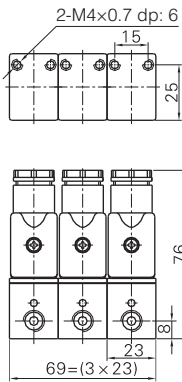


#### Grommet

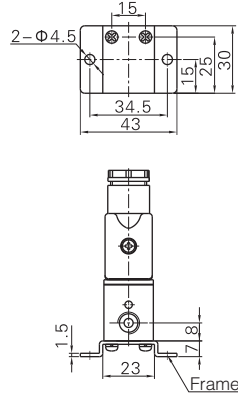


### Series connection

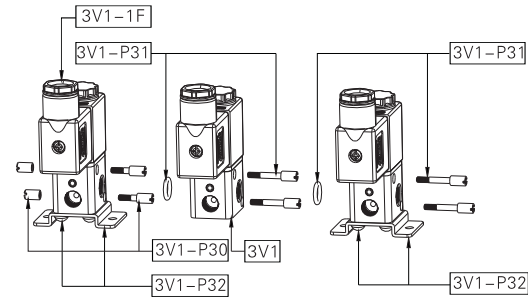
#### Dimensions(3F)



#### Dimensions(1F)



#### How to joint



#### Product structure

Connection	Amount	Q.TY	3V1	3V1-P30	3V1-P31	3V1-P32
3V1-□-□-1F	1		0	0	0	1
3V1-□-□-2F	2		1	1	1	1
.....	.....		.....	.....	.....	.....
3V1-□-□- <i>n</i> F	<i>n</i>		1	<i>n</i> -1	<i>n</i> -1	2

Note: *n* is the number of junction valve, and  $n \geq 3$ .

### Ordering code for series

3V	1	06	A	□	3F	□
Model	Code	Port size	Voltage	Electrical entry	Number of stations	Thread type
3V Solenoid valve (3/2 way)	1   1 Series	M5   M5 06   PT1/8	A AC220V B DC24V C AC110V E AC24V F DC12V	Blank Terminal I Grommet	1F 1 Station 2F 2 Station 3F 3 Station ..... 20F 20 Station	Port size Thread type 1/8" BlankP: T G: G T: NPT M5 Not this code

The above codes have included the series accessories, so it is unnecessary to order the accessories specially. But if you like, you could order as follows.

Code of accessories	Accessory name	Part code	Part name	Quantity
3V1-P30	Coupling screw assembly	F-3V1002N	Coupling screw(S)	2
		F-3V1003N	Coupling screw(M)	2
3V1-P31	Coupling screw assembly	GOR20008N75	O-Ring	1
		F-3V1004N	Coupling screw(L)	2
3V1-P32	Bracket assembly	F-3V1001N	Fixed mounting	1
		GSDA04008WA	Cross round head screw	2

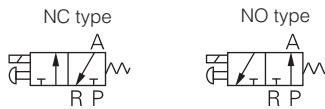


### Specifications

Model	3V206	3V208
Fluid	Air(to be filtered by 40μm filter element)	
Acting	Direct acting	
Port size ①	PT1/8	PT1/4
Vave type	3 port 2 position	
Orifice size	3.2mm <sup>2</sup> (Cv=0.18)	3.4mm <sup>2</sup> (Cv=0.19)
Lubrication	Not required	
Operating Pressure	Common	0~0.8MPa(0~114psi)
	Vacuum	-102.2kPa~0.1MPa(-1.45~14.2psi)
Proof pressure	1.2MPa(175psi)	
Temperature ℃	-20~70	
Material of body	Aluminum alloy	

① PT thread, G thread and NPT thread are avilil.

### Symbol



### Product feature

1. Direct acting type and normally closed mode, flexible in direction change.
2. Normally closed and normally open types are optional.
3. Structure in coaxial blanking mode: leakage proof and large air flow.
4. No need to add oil for lubrication.
5. Affiliated manual devices are equipped to facilitate installation and debugging.
6. Several standard voltage grades are optional.
7. Can be used under vacuum condition.

### Coil specifications

Item	specifications				
Standard voltage	AC220V	AC110V	AC24V	DC24V	DC12V
Scope of voltage	AC: ±15% DC: ±10%				
Power consumption	AC: 7VA DC: 7.0W				
Protection	IP65(DIN40050)				
Temperature classification	B class				
Electrical entry	Terminal, Grommet				
Activating time	0.05 sec and below				
Max. frequency ①	10 cycle/sec				

① The maximum actuation frequency is in the no-load state.

### Ordering code

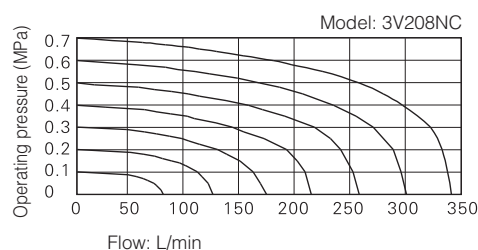
<b>3V</b>	<b>2</b>	<b>08</b>	<b>NC</b>	<b>A</b>
<b>Model</b>	<b>Port size</b>			<b>Voltage</b>
3V Solenoid valve (3/2 way)	06 1/8"			A AC220V
	08 1/4"			B DC24V
<b>Code</b>	<b>Acting type</b>			C AC110V
2   2 Series	NC Normally closed			E AC24V
	NO Normally opened			F DC12V

<b>Electrical entry</b>	
Blank	Terminal
I	Grommet
<b>Thread type</b>	
Blank	PT
G	G
T	NPT

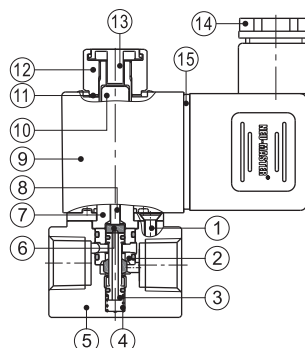
### Ordering code of accessories

<b>F</b>	<b>3V2</b>	<b>FA</b>
<b>Accessories code</b>		<b>Accessories type</b>
F Mounting accessories		FA FA Bracket
<b>Valve type</b>		
3V2 Solenoid valve(3/2 way)		

### Flow chart



### Inner structure

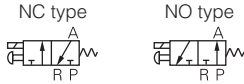


No.	Item	No.	Item
1	Pilot screw	9	Coil
2	Spacer	10	Armature
3	Spool	11	Washer
4	Spring	12	Coil nut
5	Body	13	Manual button
6	Washer	14	Connector
7	Electromagnet set	15	Gasket
8	Man drill		





### Symbol



### Product feature

1. Direct acting type and normally closed mode, flexible in direction change.
2. Normally closed and normally open types are optional.
3. Structure in coaxial blanking mode: leakage proof and large air flow.
4. No need to add oil for lubrication.
5. Affiliated manual devices are equipped to facilitate installation and debugging.
6. Valve needs to be used with the sub-base and allows various connection combinations to save space.
7. It is easy to examine when there are faults owing to the unified air intake and exhaust and unified wiring.
8. Flexible combination and strong expansion capability can make any combination or expansion of the numbers of direction control valves that are connected.
9. Can adjust the installation direction of special sub-base seal for NO or NC functions.

### Specifications

Model	3V2M
Fluid	Air (to be filtered by 40µm filter element)
Acting	Direct acting
Port size ①	1/8"
Valve type	3 port 2 position
Orifice size	1.7mm <sup>2</sup> (Cv=0.1)
Exhaust type	Centralized exhaust, Separated exhaust
Operating pressure	0~0.8MPa(0~114psi)
Proof pressure	1.2MPa(175psi)
Temperature °C	-20~70
Material of body	Aluminum alloy

① PT thread, G thread and NPT thread are available.

### Coil specifications

Item	Specification				
Standard voltage	AC220V	AC110V	AC24V	DC24V	DC12V
Scope of voltage	AC: ± 15% DC: ± 10%				
Power consumption	AC: 7VA DC: 7.0W				
Protection	IP65(DIN40050)				
Temperature classification	B Class				
Electrical entry	Terminal, Grommet				
Activating time	0.05 sec and below				
Max. frequency ①	10 cvc/lec				

① The maximum actuation frequency is in the no-load state.

### Ordering code

#### Ordering code for calve

<b>3V2M</b>		<b>NC</b>	<b>A</b>							
<b>Model</b>		<b>Voltage</b>								
3V2M	Solenoid valve (3/2 way, with manifold)	A	AC220V	<table border="1"> <tr> <th colspan="2">Electrical entry</th> </tr> <tr> <td>Blank</td> <td>Terminal</td> </tr> <tr> <td>I</td> <td>Grommet</td> </tr> </table>	Electrical entry		Blank	Terminal	I	Grommet
Electrical entry										
Blank	Terminal									
I	Grommet									
		B	DC24V							
		C	AC110V							
		E	AC24V							
		F	DC12V							
<b>Acting type</b>										
NC	Normally closed									
NO	Normally opened									

#### Ordering code for manifold

<b>3V2M</b>		<b>5F</b>	<b>D</b>									
<b>Model</b>		<b>Exhaust type</b>										
3V2M	Solenoid valve (3/2 way, with manifold)	Blank	Centralized exhaust	<table border="1"> <tr> <th colspan="2">Thread type</th> </tr> <tr> <td>Blank</td> <td>PT</td> </tr> <tr> <td>G</td> <td>G</td> </tr> <tr> <td>T</td> <td>NPT</td> </tr> </table>	Thread type		Blank	PT	G	G	T	NPT
Thread type												
Blank	PT											
G	G											
T	NPT											
		D	Separated exhaust									
<b>Number of stations</b>												
1F	1 Station											
2F	2 Station											
.....												
20F	20 Station											

Note: Manifold kits contains manifold, seal and screw. The port size is only 1/8".

#### Ordering code for calve's group(valve+manifold)

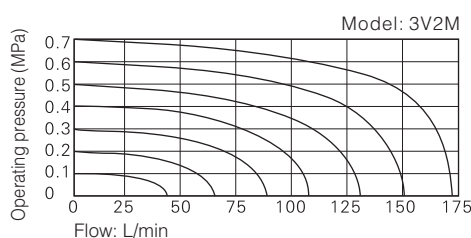
<b>3V2M</b>		<b>NC</b>	<b>A</b>		<b>D</b>	<b>5F</b>		
<b>Model</b>		<b>Voltage</b>			<b>Electrical entry</b>		<b>Number of stations</b>	
3V2M	Solenoid valve (3/2 way, with manifold)	A	AC220V	Blank	Terminal	1F	1 Station	
		B	DC24V	I	Grommet	2F	2 Station	
		C	AC110V			.....		
		E	AC24V			20F	20 Station	
		F	DC12V					
<b>Acting type</b>					<b>Exhaust type</b>		<b>Thread type</b>	
NC	Normally closed				Blank	Centralized exhaust	Blank	PT
NO	Normally opened				D	Separated exhaust	G	G
							T	NPT

#### Ordering code for blank plate

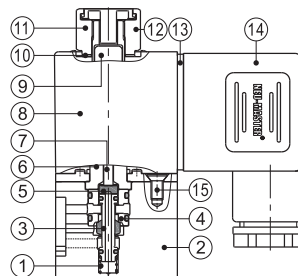
<b>P</b>	<b>3V2M</b>	<b>R2</b>
<b>Assembly code</b>	<b>Model</b>	<b>Code</b>
P	Solenoid valve (3/2 way, with manifold)	R2
	3V2M	Blank plate for manifold

Note: Manifold kits contains manifold, seal and screw. The port size is only 1/8".

### Flow chart



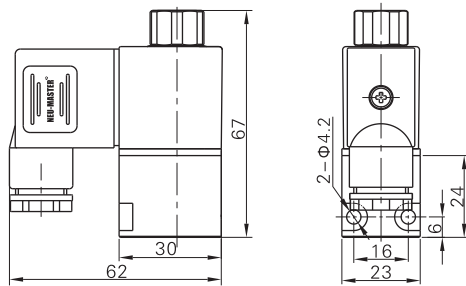
### Inner structure



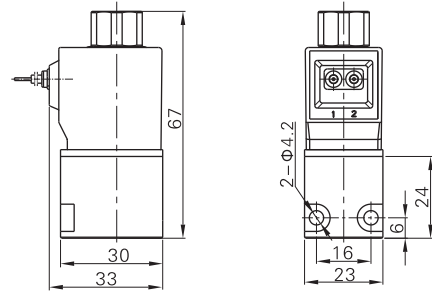
No.	Item	No.	Item
1	Spring	9	Armature
2	Body	10	Washer
3	Spool	11	Coil nut
4	Spacer	12	Manual button
5	Washer	13	Gasket
6	Electromagnet set	14	Connector
7	Man drill	15	Pilot screw
8	Coil		

### Dimensions

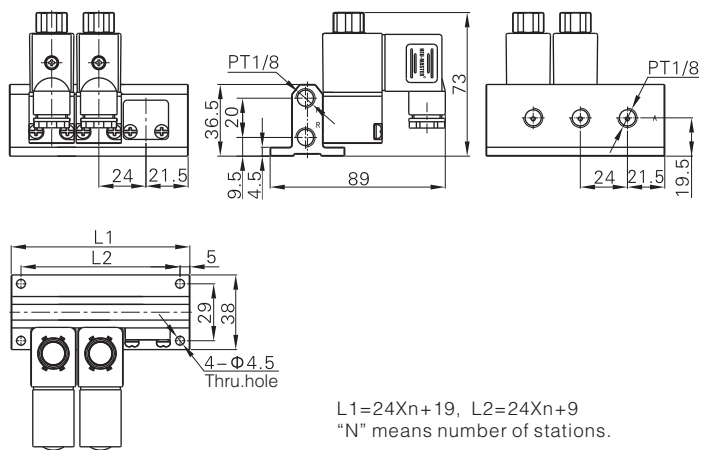
#### Valve (Terminal)



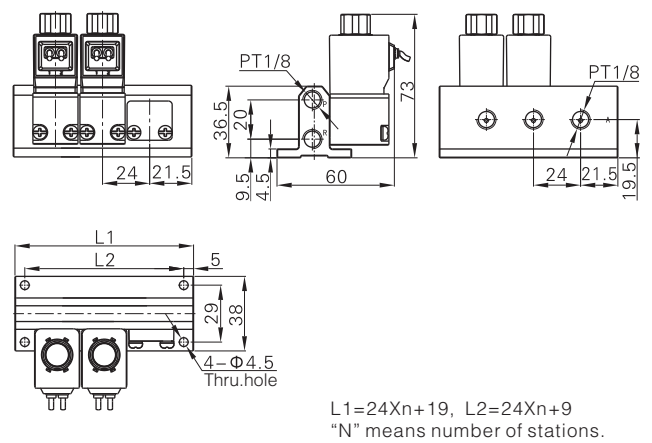
#### Valve (Grommet)



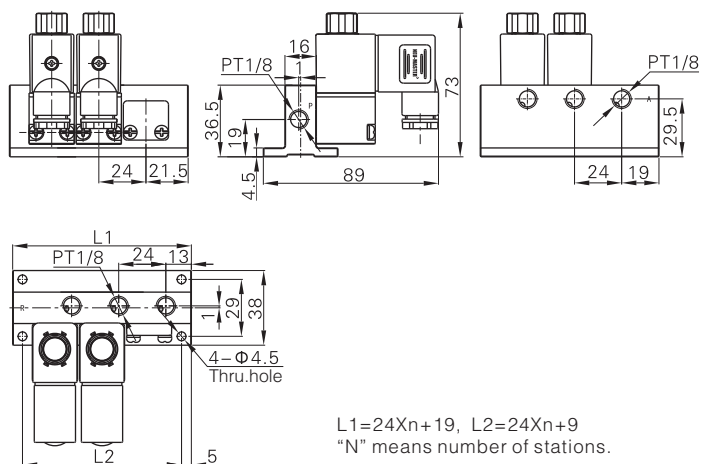
#### Valve's group (Terminal, Centralized exhaust)



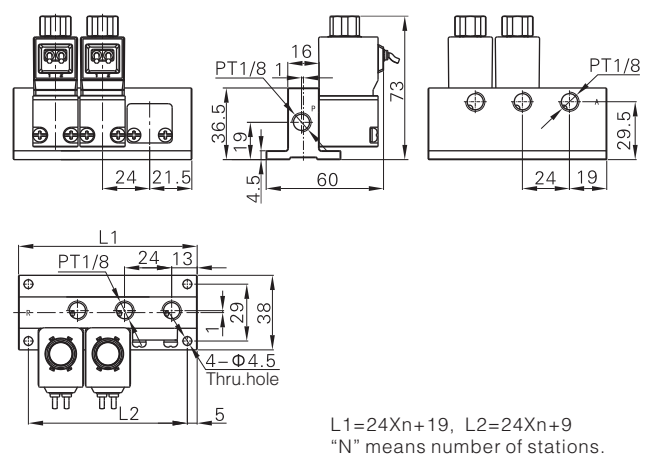
#### Valve's group (Terminal, Separated exhaust)

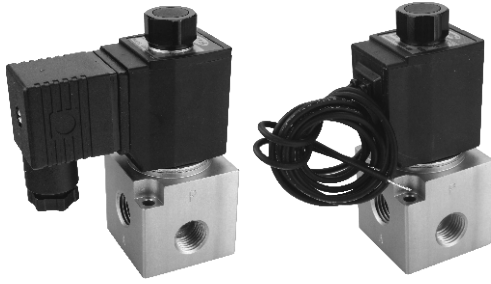


#### Valve's group (Grommet, Centralized exhaust)



#### Valve's group (Grommet, Separated exhaust)



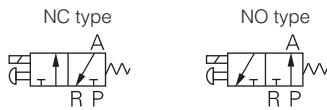


### Specifications

Model	3V308	
Fluid	Air(to be filtered by 40μm filter element)	
Acting	direct acting	
Port size ①	PT1/4	
Vave type	3 port 2 position	
Orifice size	11mm <sup>2</sup> (Cv=0.62)	
Lubrication	Not required	
Operating Pressure	Common	0~0.8MPa(0~114psi)
	Vacuum	-102.2kPa~0.1MPa(-1.45~14.2psi)
Proof pressure	1.2MPa(175psi)	
Temperature ℃	-20~70	
Material of body	Aluminum alloy	

① PT thread, G thread and NPT thread are avilil.

### Symbol



### Product feature

1. Direct acting type and normally closed mode, flexible in direction change.
2. Normally closed and normally open types are optional.
3. Structure in coaxial blanking mode: leakage proof and large air flow.
4. No need to add oil for lubrication.
5. Affiliated manual devices are equipped to facilitate installation and debugging.
6. Several standard voltage grades are optional.
7. Can be used under vacuum condition.

### Coil specifications

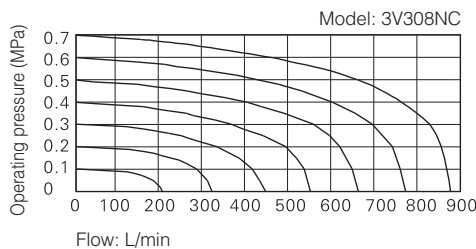
Item	specifications				
Standard voltage	AC220V	AC110V	AC24V	DC24V	DC12V
Scope of voltage	AC: ±15% DC: ±10%				
Power consumption	AC: 10VA DC: 6.5W				
Protection	IP65(DIN40050)				
Temperature classification	B class				
Electrical entry	Terminal, Grommet				
Activating time	0.05 sec and below				
Max. frequency ①	10 cycle/sec				

① The maximum actuation frequency is in the no-load state.

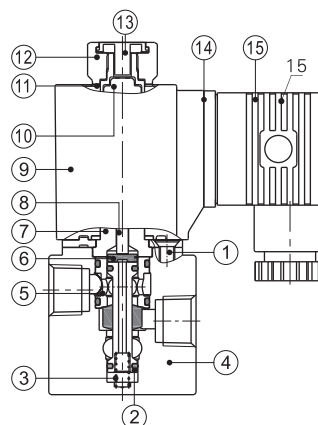
### Ordering code

Model	Code	Port size	Acting type	Voltage	Electrical entry	Thread type
3V Solenoid valve (3/2 way)	3 3 Series	08 1/4"	NC Normally closed NO Normally opened	A AC220V B DC24V C AC110V E AC24V F DC12V	Blank Terminal I Grommet	Blank PT G G T NPT

### Flow chart



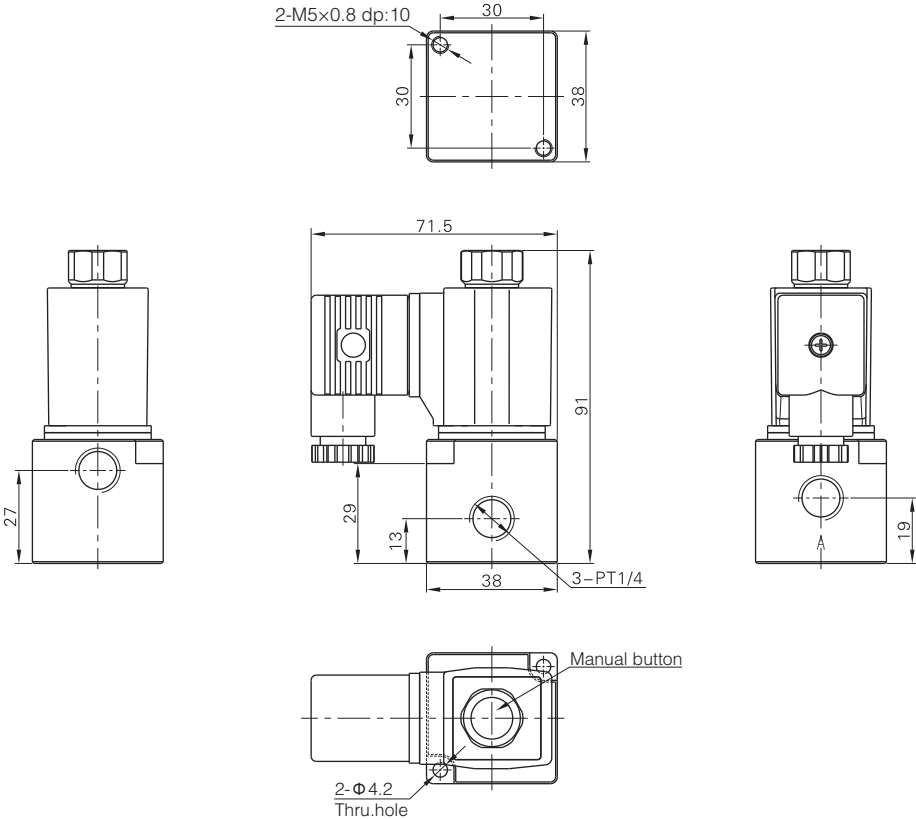
### Inner structure



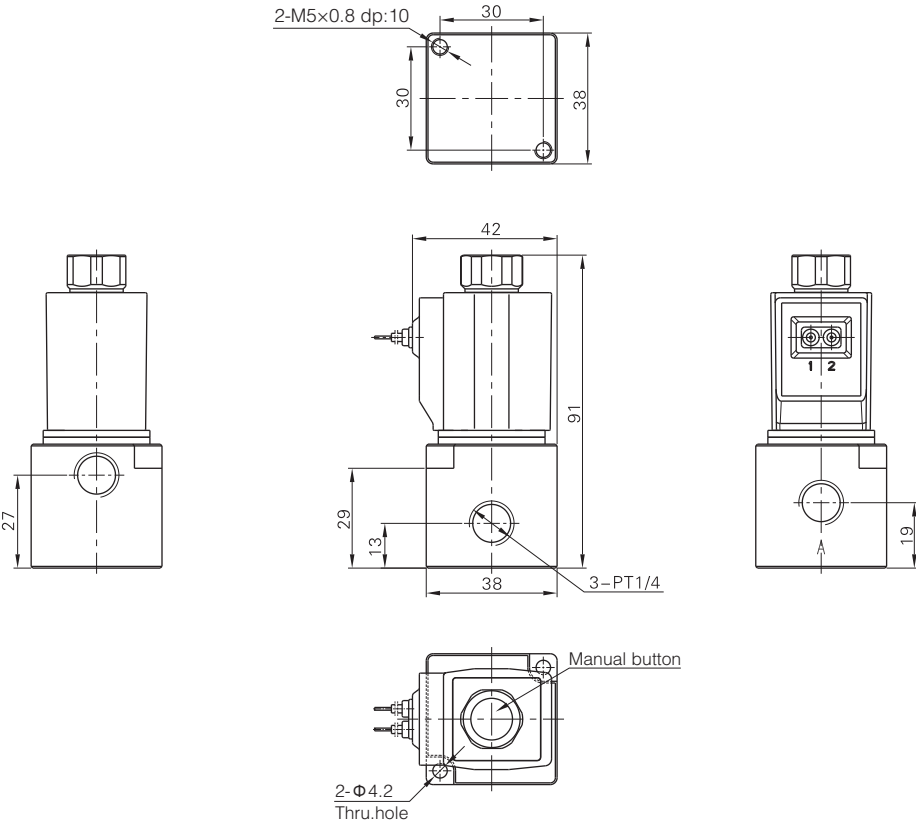
No.	Item	No.	Item
1	Pilot screw	9	Coil
2	Spool	10	Armature
3	Spring	11	Washer
4	Body	12	Coil nut
5	Washer	13	Manual button
6	Spacer	14	Gasket
7	Electromagnet set	15	Connector
8	Man drill		

### Dimensions

#### Terminal



#### Grommet







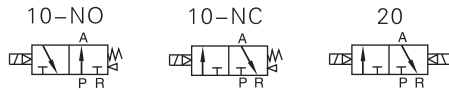
### Specifications

Model	3V110-M5	3V120-M5	3V110-06	3V120-06
Fluid	Air(to be filtered by 40μm filter element)			
Acting	Internal pilot or external pilot			
Port size ①	M5		PT1/8	
Orifice size	5.5mm <sup>2</sup> (Cv=0.31)		12.0mm <sup>2</sup> (Cv=0.67)	
Valve type	3 port 2 position			
Lubrication ②	Not required			
Operating pressure	0.15~0.8MPa(21~114psi)			
Proof pressure	1.2MPa(175psi)			
Temperature ℃	-20~70			
Material of body	Aluminum alloy			

① PT thread, G thread and NPT thread are available.

② Once lubricated air is used, continue with same medium to optimise valve life span. Lubricants like ISO VG32 or equivalent are recommended.

### Symbol



### Product feature

1. Pilot-oriented mode: Internal pilot or external pilot.
2. Structure in sliding column mode: good tightness and sensitive reaction.
3. Double control solenoid valves have memory function.
4. Internal hole adopts special processing technology which has little attrition friction, low start pressure and long service life.
5. No need to add oil for lubrication.
6. Affiliated manual devices are equipped to facilitate installation and debugging.
7. Several standard voltage grades are optional.
8. Integrate with the manifold to save installation space.

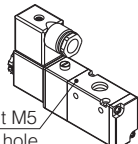
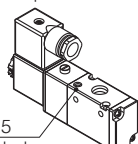
### Coil specifications

Item	specifications				
Standard voltage	AC220V	AC110V	AC24V	DC24V	DC12V
Scope of voltage	AC: ±15% DC: ±10%				
Power consumption	3.5VA	3.5VA	4.0VA	2.5W	2.5W
Protection	IP65(DIN40050)				
Temperature classification	B Class				
Electrical entry	Terminal, Grommet				
Activating time	0.05 sec and below				
Max. frequency ①	5 cycle/sec				

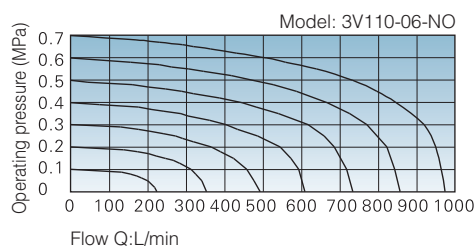
① The maximum actuation frequency is in the no-load state.

### Ordering code

<b>3V</b>	<b>1</b>	<b>10</b>	<b>06</b>	<b>NO</b>
<b>Model</b>		<b>Port size</b>		
3V Solenoid valve (3/2 way)		M5 M5		
		06 PT1/8		
<b>Code</b>		<b>Acting type</b>		
1 100 Series		Valve type Acting type		
<b>Valve type</b>		10 NC: Normally closed		
10 Single solenoid		NO: Normally opened		
20 Double solenoid		20 Not code		

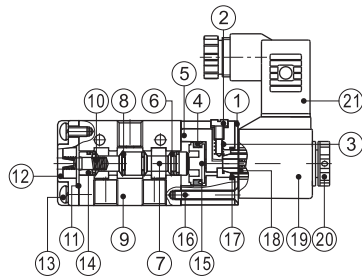
<b>A</b>	<input type="checkbox"/>	<input type="checkbox"/>	-	<b>W</b>
<b>Voltage</b>	<b>Electrical entry</b>	<b>Thread type</b>		<b>Pilot type</b>
A AC220V	Blank Terminal	Port size Thread type		Blank: Internal pilot
B DC24V	I Grommet	PT1/8	Blank: PT	
C AC110V		M5	G: G	Without M5 thread hole
E AC24V			T: NPT	W: External pilot
F DC12V			Not this code	
				With M5 thread hole

### Flow chart

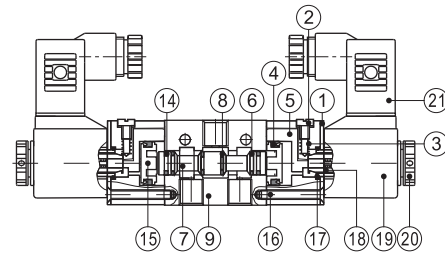


### Inner structure

#### 3V110



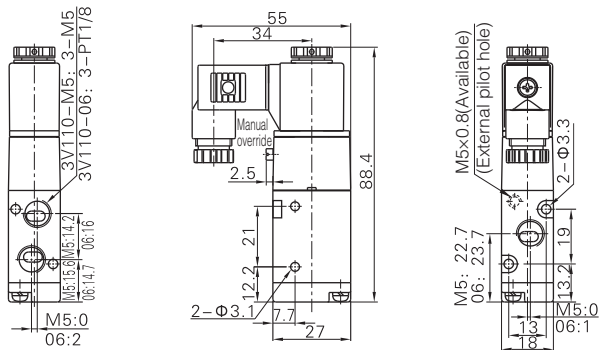
#### 3V120



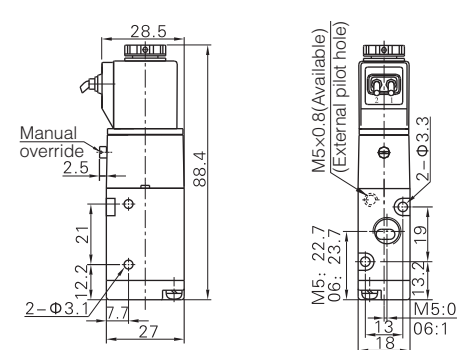
No.	Item	No.	Item	No.	Item
1	Fixed plate	8	O-ring	15	Piston
2	Manual override	9	Body	16	Pilot screw
3	Override spring	10	Spool spring	17	O-ring
4	Piston O-ring	11	Bottom cover gasket	18	Armature
5	Pilot body	12	Bottom cover	19	Coil
6	Spool packing	13	Screw	20	Coil net
7	Spool	14	Wear ring	21	Connector

### Dimensions

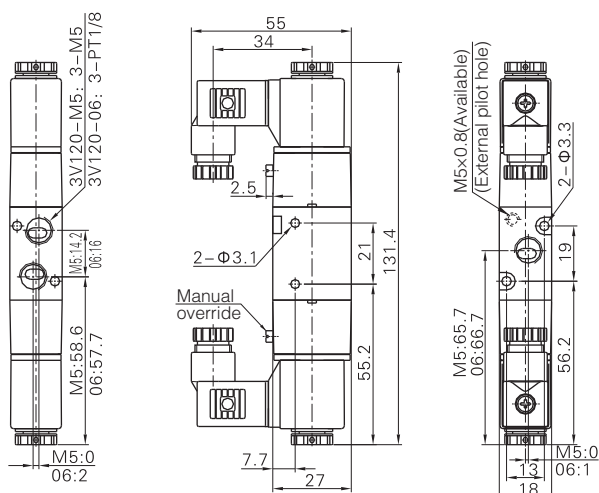
#### 3V110(Terminal)



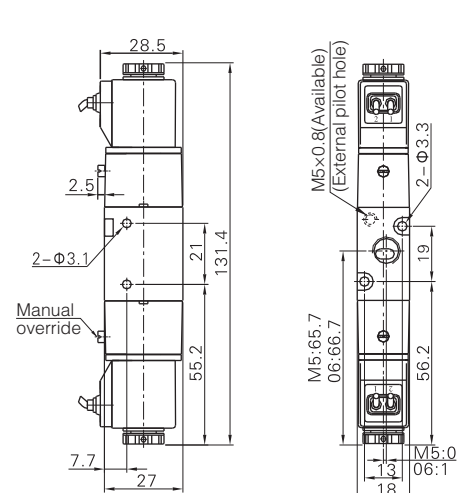
#### 3V110(Grommet)



#### 3V120(Terminal)



#### 3V120(Grommet)





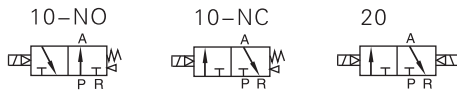
### Specifications

Model	3V210-06	3V220-06	3V210-08	3V220-08
Fluid	Air(to be filtered by 40μm filter element)			
Acting	Internal pilot or external pilot			
Port size ①	In=Out=PT1/8		In=Out=PT1/4	
Orifice size	14.0mm <sup>2</sup> (Cv=0.78)		16.0mm <sup>2</sup> (Cv=0.89)	
Valve type	3 port 2 position			
Lubrication ②	Not required			
Operating pressure	0.15~0.8MPa(21~114psi)			
Proof pressure	1.2MPa(175psi)			
Temperature ℃	-20~70			
Material of body	Aluminum alloy			

① PT thread, G thread and NPT thread are available.

② Once lubricated air is used, continue with same medium to optimise valve life span. Lubricants like ISO VG32 orequivalent are recommended.

### Symbol



### Product feature

1. Pilot-oriented mode: Internal pilot or external pilot.
2. Structure in sliding column mode: good tightness and sensitive reaction.
3. Double control solenoid valves have memory function.
4. Internal hole adopts special processing technology which has little attrition friction, low start pressure and long service life.
5. No need to add oil for lubrication.
6. Affiliated manual devices are equipped to facilitate installation and debugging.
7. Several standard voltage grades are optional.
8. Integrate with the manifold to save installation space.

### Coil specifications

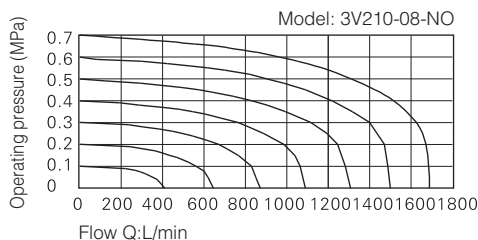
Item	specifications				
Standard voltage	AC220V	AC110V	AC24V	DC24V	DC12V
Scope of voltage	AC: ±15% DC: ±10%				
Power consumption	4.5VA	4.5VA	5.0VA	3.0W	3.0W
Protection	IP65(DIN40050)				
Temperature classification	B Class				
Electrical entry	Terminal, Grommet				
Activating time	0.05 sec and below				
Max. frequency ①	5 cycle/sec				

① The maximum actuation frequency is in the no-load state.

### Ordering code

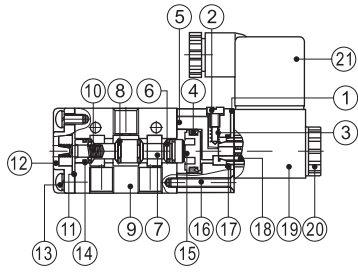
<b>3V</b>	<b>2</b>	<b>10</b>	<b>08</b>	<b>NO</b>	<b>A</b>	<input type="checkbox"/>	<input type="checkbox"/>	<b>W</b>
<b>Model</b>	<b>Valve type</b>	<b>Acting type</b>	<b>Acting type</b>	<b>Valve type</b>	<b>Acting type</b>	<b>Voltage</b>	<b>Electrical entry</b>	<b>Pilot type</b>
3V Solenoid valve (3/2 way)	10 Single solenoid 20 Double solenoid	10 NC: Normally closed 20 NO: Normally opened	10 NC: Normally closed 20 NO: Normally opened	10 NC: Normally closed 20 NO: Normally opened	A AC220V B DC24V C AC110V E AC24V F DC12V	Blank Terminal I Grommet	Blank Terminal I Grommet	Blank: Internal pilot W: External pilot
<b>Code</b>	<b>Port size</b>					<b>Thread type</b>		
2 200 Series	06 1/8" 08 1/4"					Blank PT G G T NPT		Without M5 thread hole With M5 thread hole

### Flow chart

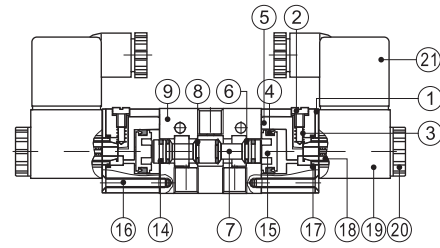


### Inner structure

#### 3V210



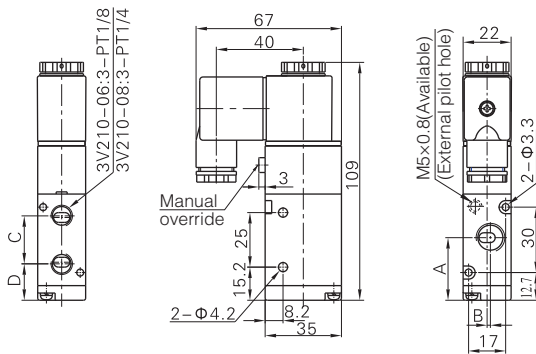
#### 3V220



No.	Item	No.	Item	No.	Item
1	Fixed plate	8	O-ring	15	Piston
2	Manual override	9	Body	16	Pilot screw
3	Override spring	10	Spool spring	17	O-ring
4	Piston O-ring	11	Bottom cover gasket	18	Armature
5	Pilot body	12	Bottom cover	19	Coil
6	Spool packing	13	Screw	20	Coil net
7	Spool	14	Wear ring	21	Connector

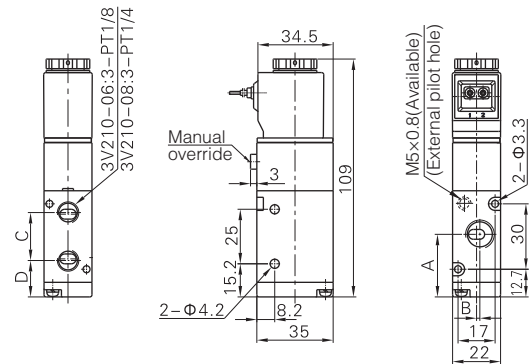
### Dimensions

#### 3V210(Terminal)



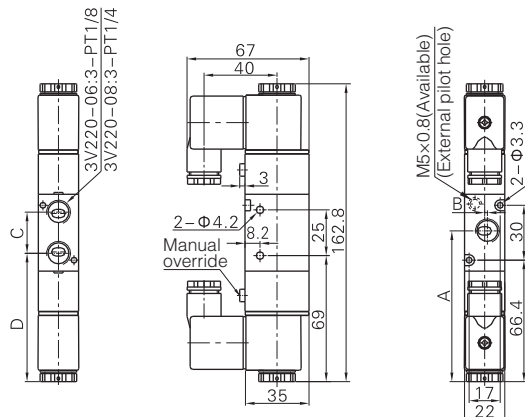
Item\Model	3V210-06	3V210-08
A	27.7	28.7
B	0	1.5
C	22	22.5
D	16.7	16.5

#### 3V210(Grommet)



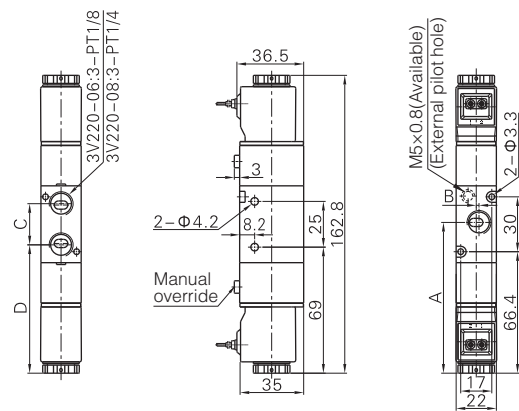
Item\Model	3V210-06	3V210-08
A	27.7	28.7
B	0	1.5
C	22	22.5
D	16.7	16.5

#### 3V220(Terminal)



Item\Model	3V220-06	3V220-08
A	81.4	82.4
B	0	1.5
C	22	22.5
D	70.4	70.2

#### 3V220(Grommet)



Item\Model	3V220-06	3V220-08
A	81.4	82.4
B	0	1.5
C	22	22.5
D	70.4	70.2



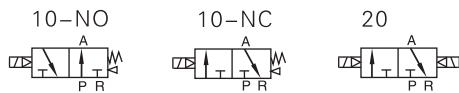
### Specifications

Model	3V310-08	3V320-08	3V310-10	3V320-10
Fluid	Air(to be filtered by 40µm filter element)			
Acting	Internal pilot or external pilot			
Port size ①	In=Out=PT1/4		In=Out=PT3/8	
Orifice size	25.0mm <sup>2</sup> (Cv=1.39)		30.0mm <sup>2</sup> (Cv=1.67)	
Valve type	3 port 2 position			
Lubrication ②	Not required			
Operating pressure	0.15~0.8MPa(21~114psi)			
Proof pressure	1.2MPa(175psi)			
Temperature °C	-20~70			
Material of body	Aluminum alloy			

① PT thread, G thread and NPT thread are available.

② Once lubricated air is used, continue with same medium to optimise valve life span. Lubricants like ISO VG32 are recommended.

### Symbol



### Product feature

1. Pilot-oriented mode: Internal pilot or external pilot.
2. Structure in sliding column mode: good tightness and sensitive reaction.
3. Double control solenoid valves have memory function.
4. Internal hole adopts special processing technology which has little attrition friction, low start pressure and long service life.
5. No need to add oil for lubrication.
6. Affiliated manual devices are equipped to facilitate installation and debugging.
7. Several standard voltage grades are optional.
8. Integrate with the manifold to save installation space.

### Coil specifications

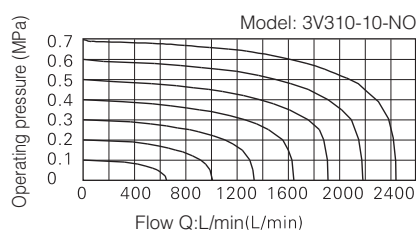
Item	specifications				
Standard voltage	AC220V	AC110V	AC24V	DC24V	DC12V
Scope of voltage	AC: ±15% DC: ±10%				
Power consumption	4.5VA	4.5VA	5.0VA	3.0W	3.0W
Protection	IP65(DIN40050)				
Temperature classification	B Class				
Electrical entry	Terminal, Grommet				
Activating time	0.05 sec and below				
Max. frequency ①	5 cycle/sec				

① The maximum actuation frequency is in the no-load state.

### Ordering code

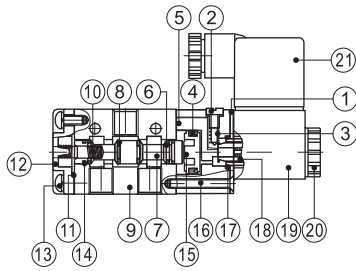
<b>3V</b>	<b>3</b>	<b>10</b>	<b>10</b>	<b>NO</b>	<b>A</b>	<b>□</b>	<b>□</b>	<b>W</b>
<b>Model</b>	<b>Valve type</b>	<b>Acting type</b>	<b>Voltage</b>	<b>Electrical entry</b>	<b>Thread type</b>	<b>Pilot type</b>		
3V Solenoid valve (3/2 way)	10 Single solenoid 20 Double solenoid	Valve type Acting type 10 NC: Normally closed NO: Normally opened 20 Not code	A AC220V B DC24V C AC110V E AC24V F DC12V	Blank Terminal I Grommet	Blank PT G G T NPT	Blank: Internal pilot W: External pilot		
<b>Code</b>	<b>Port size</b>							
3 300 Series	08 1/4" 10 3/8"							

### Flow chart

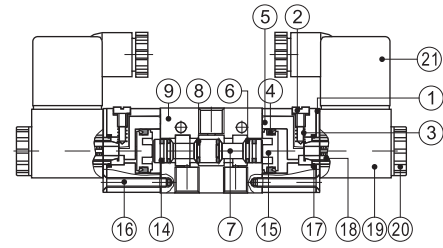


### Inner structure

3V310



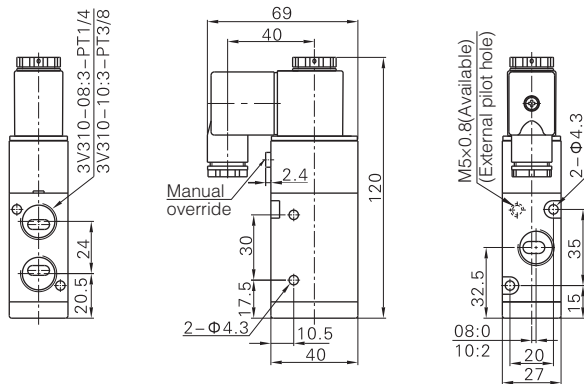
3V320



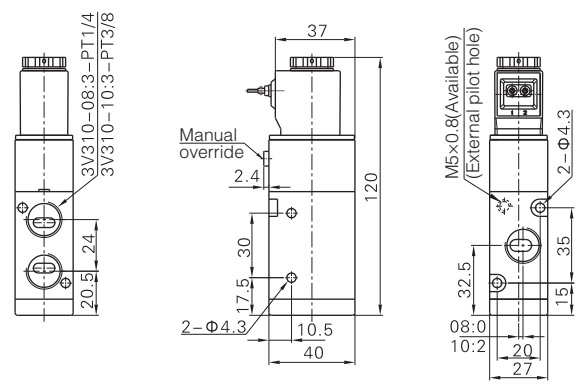
No.	Item	No.	Item	No.	Item
1	Fixed plate	8	O-ring	15	Piston
2	Manual override	9	Body	16	Pilot screw
3	Override spring	10	Spool spring	17	O-ring
4	Piston O-ring	11	Bottom cover gasket	18	Armature
5	Pilot body	12	Bottom cover	19	Coil
6	Spool packing	13	Screw	20	Coil net
7	Spool	14	Wear ring	21	Connector

### Dimensions

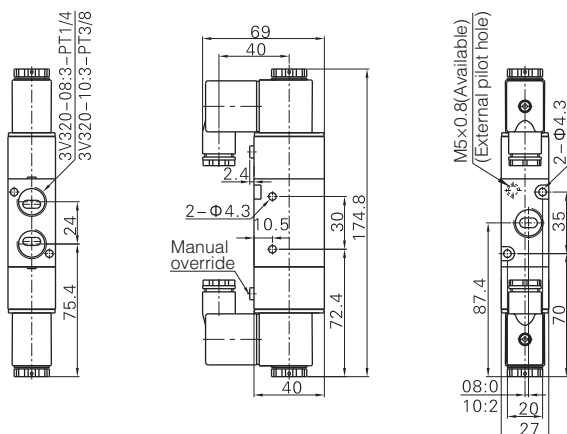
3V310(Terminal)



3V310(Grommet)



3V320(Terminal)



3V320(Grommet)

