



### Specifications

Model	ASC100-06	ASC200-08	ASC300-10	ASC300-15	
Fluid	Air(to be filtered by 40 μm filter element)				
Port size ①	PT1/8	PT1/4	PT3/8	PT1/2	
Pressure range	0.05~0.95MPa(7~135psi)				
Proof pressure	1.5MPa(215psi)				
Temperature °C	-20~70				
Material body	Aluminum alloy				
Flow (L/min)	Control flow	200	450	1250	1650
	Free flow	400	800	1500	2500

① PT thread, G thread and NPT thread are available.

### Symbol



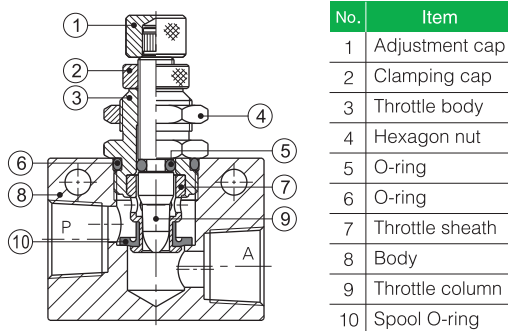
### Product feature

1. Small and compact structure.
2. Allows air to exhaust and cut off air flow. The adjustment screw is both sensitive and precise.
3. Can be mounted in various position to facilitate installation and application.

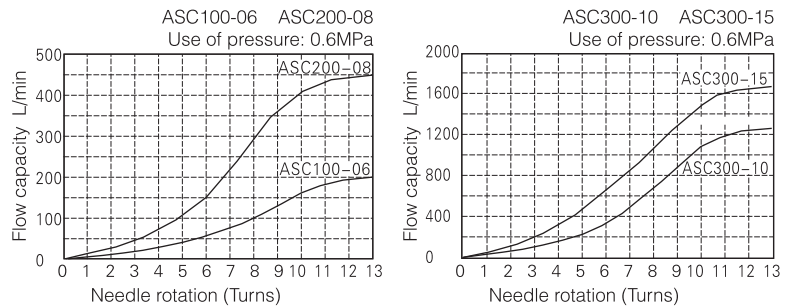
### Ordering code

ASC		300		08		□	
Model		Code		Port size		Thread type	
ASC	Flow control valve	100	100 Series	Model	Port size	Blank	PT
		200	200 Series	100 Series	06 PT1/8	G	G
		300	300 Series	200 Series	08 PT1/4	T	NPT
				300 Series	10 PT3/8		
					15 PT1/2		

### Inner structure

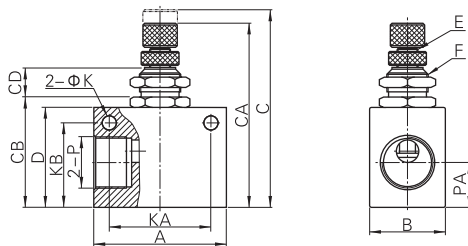


### Flow chart

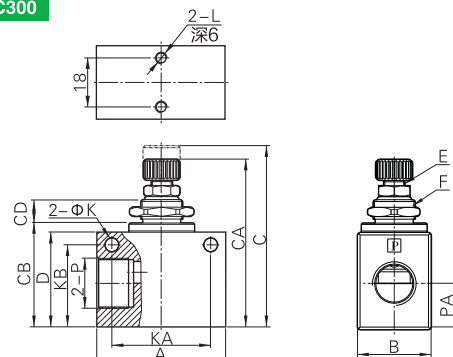


### Dimensions

#### ASC100\ASC200



#### ASC300



Model\Item	A	B	C	CA	CB	CD	D	E	F	K	KA	KB	L	P	PA
ASC100-06	32	18	52.5	47	26	8.6	23	M6×0.5	M12×0.75	4.3	22	18	M4×0.7	PT1/8	10
ASC200-08	36	18	56.5	51	30	8.6	27	M6×0.5	M12×0.75	4.3	26	23	M4×0.7	PT1/4	13.5
ASC300-10	50	28	74	65	40.5	10	37	M8×0.75	M16×1.0	5.3	35	32	M4×0.7	PT3/8	17.5
ASC300-15	50	28	74	65	40.5	10	37	M8×0.75	M16×1.0	5.3	35	32	M4×0.7	PT1/2	17.5