

### Symbol



### Product feature

1. Back pressure structure, compact type, cost-effective, installation time saving.
2. Broad regulating range; low-pressure type is optional applicable to situation which has low expectation on output pressure but high expectation on performance and cost-effectiveness.
3. Single unit installation; easy to mount.

### Ordering code

<b>SDR</b>		<b>200</b>		<b>08</b>		<b>L</b>		<b>1</b>		<b>1</b>	
<b>Model</b>		<b>Port size</b>		<b>Type code</b>		<b>Accessories</b>		<b>Pressure gauge</b>		<b>Thread type</b>	
SDR	SDR Series Regulator	Series	Port size	Blank	Standard	Blank	Bracket	Blank	Pressure gauge	Blank	PT
		100	M5: M5	L	Lower pressure	J	No bracket(standard configuration)	N	No pressure gauge	G	G
		200	06: 1/8"							T	NPT
			06: 1/8"								
			08: 1/4"								
<b>Series code</b>								<b>Scale</b>			
100	100 Series							1	Mpa		
200	200 Series							2	psi		
								3	bar		
								4	Double scale(psi, kgf/cm <sup>2</sup> )		

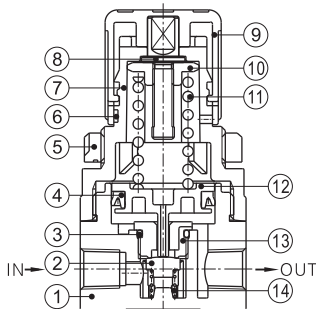
### Specification

Model	SDR100-M5	SDR100-06	SDR200-06	SDR200-08	SDR100L-M5	SDR100L-06	SDR200L-06	SDR200L-08
Fluid	Air							
Pressure range	0.05~0.9MPa(7~130psi)				0.03~0.4MPa(4~57psi)			
Max. pressure					1.0MPa(145psi)			
Proof pressure					1.5MPa(215psi)			
Temperature range	-20~70℃							
Port size	M5	PT1/8	PT1/4	PT1/4	M5	PT1/8	PT1/8	PT1/4

① PT thread, G thread and NPT thread are available.

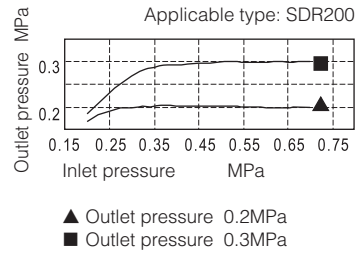
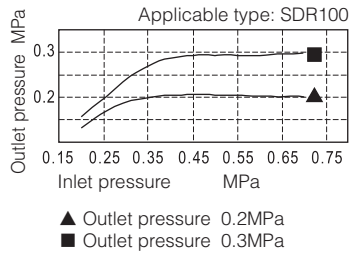
### Inner structure and material of major parts

#### SDR200

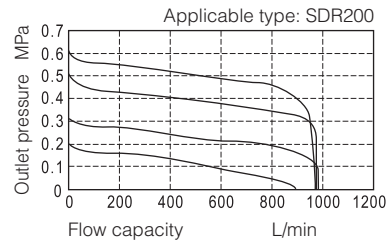
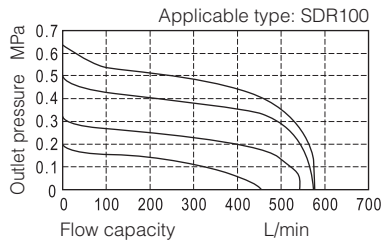


No.	Item	Material
1	Body	Aluminum alloy
2	Needle gasket	NBR
3	O-ring	NBR
4	O-ring	NBR
5	Fixed ring	POM
6	Identification ring	POM
7	Adjusting seat	POM
8	Adjusting pillar	Brass
9	Adjusting button	POM
10	Adjusting nut	Steel
11	Adjusting spring	SWC
12	Piston rod	POM
13	Adjusting seat	POM
14	Return spring	SUS304

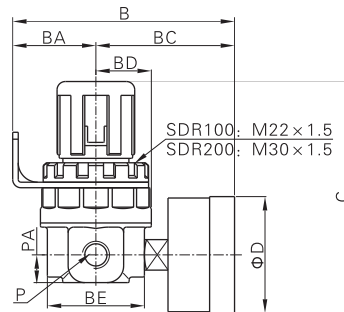
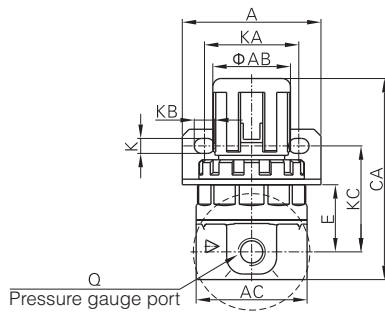
### Pressure chart



### Flow chart



### Dimensions



Model\Item	A	AB	AC	B	BA	BC	BD	BE	C	CA	D	E	K	KA	KB	KC	P	PA	Q
SDR100□M5	35	20	32	65.5	26	39.5	14.5	29	62.5	54.5	33	17	5.5	22	7	29	M5	7.5	PT1/16
SDR100□06	35	20	32	65.5	26	39.5	14.5	29	62.5	54.5	33	17	5.5	22	7	29	PT1/8	7.5	PT1/16
SDR200□06	50	28	40	80	30	50	20	35	83.5	72.5	42	24	5.5	34	7.5	38	PT1/8	10	PT1/8
SDR200□08	50	28	40	80	30	50	20	35	83.5	72.5	42	24	5.5	34	7.5	38	PT1/4	10	PT1/8

Note: Bracket and pressure gauge are optional.

### Attentions of application



Unlock the regulating knob before pressure adjustment, then lock it after the adjustment. Otherwise, may cause the regulating knob damage or the outlet pressure change.

1. Pull the regulating knob to unlock, when the orange marking ring below the regulating knob appears, indicating that the regulating knob is unlocked.
2. Push the regulating knob to lock, when the orange marking ring below the regulating knob disappears completely, indicating that the regulating knob is locked.