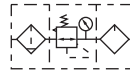


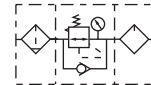


### Symbol

No reflux valve is attached



Reflux valve is attached



### Product feature

- Oil dripping adopts gap seal structure, which makes the adjustment of oil supply more reliable.
- Oil feed ring can only make one full turn. The quantity of oil supply, basically taking on linear distribution. The quantity of oil supply can be generally calculated according to the position of graduation ring.
- Filling of oil while the lubricator is under pressure is made possible.
- Special drip nozzle structure will produce negative pressure in oil dripping outlet and the mist flow is minimal.
- Quick and reliable mounting clamps makes it convenient to install and use.
- The performance of pressure adjustment is reliable with high precision.
- The efficiency of eliminating moisture and solid grain is high.
- Three drain types are available: manual drain, semi-auto drain and automatic drain.

### Ordering code

<b>GC200</b>	<b>08</b>	<b>M</b>	<b>L</b>	<b>F</b>	<b>1</b>	<b>W</b>	<b>G</b>	<b>K</b>
<b>Model</b>			<b>Type code</b>	<b>Pressure gauge shape</b>		<b>Filtering grade</b>		
GC200	G200 Series F.R.L. unit		Blank Standard	F Square		Blank 40µm		
GC300	G300 Series F.R.L. unit		L Lower pressure ①	C Circular		W 5µm		
GC400	G400 Series F.R.L. unit		<b>Pressure gauge</b>	<b>Scale</b>		<b>Thread type</b>		
GC600	G600 Series F.R.L. unit		Blank Pressure gauge	1 MPa		Blank PT		
			N No pressure gauge	2 psi		G G		
			<b>Drain type</b>	3 bar		T T: NPT		
			Blank Semi-auto drain			<b>Code of reflux valve</b>		
			M: Manual drain			Blank No reverse flow valve is attached		
			A: Automatic drain			K Reverse flow valve is attached		

① The maximum work pressure of lower pressure type is 0.4MPa(58Psi).

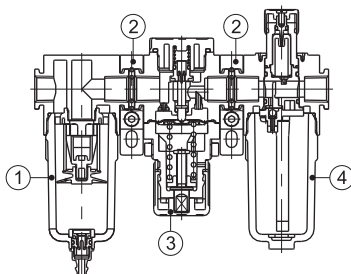
### Specification

Model	GC200-06	GC200-08	GC300-08	GC300-10	GC300-15	GC400-10	GC400-15	GC600-20	GC600-25	
Fluid	Air									
Port size	PT1/8	PT1/4	PT1/4	PT3/8	PT1/2	PT3/8	PT1/2	PT3/4	PT1	
Filtering grade	40µm or 5µm									
Pressure range	Semi-auto and automatic drain: 0.15~0.9MPa(20~130psi); Manual drain: 0.05~0.9MPa(7~130psi)									
Max. pressure	1.0MPa(145psi)									
Proof pressure	1.5MPa(215psi)									
Temperature range	-5~70°C									
Capacity of drain bowl	10CC		40CC			80CC		230CC		
Capacity of oil bowl	25CC		75CC			160CC		380CC		
Recommended lubricant	ISO VG 32 or equivalent									
Weight	580g		1300g			2360g		5550g		
Constitute	Filter	GF200-06	GF200-08	GF300-08	GF300-10	GF300-15	GF400-10	GF400-15	GF600-20	GF600-25
	Regulator	GR200-06	GR200-08	GR300-08	GR300-10	GR300-15	GR400-10	GR400-15	GR600-20	GR600-25
	Lubricator	GL200-06	GL200-08	GL300-08	GL300-10	GL300-15	GL400-10	GL400-15	GL600-20	GL600-25

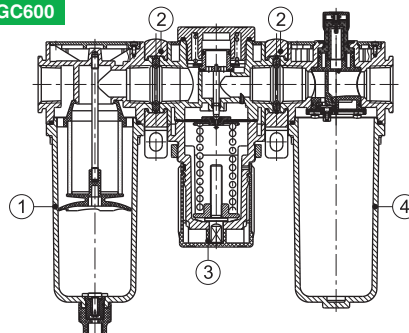
① PT thread, G thread and NPT thread are available.

### Inner structure

#### GC200

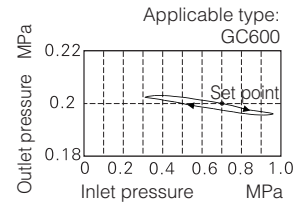
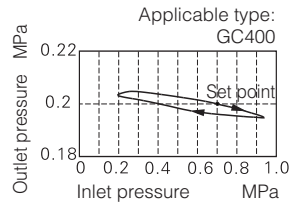
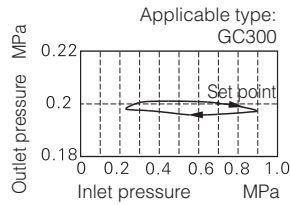
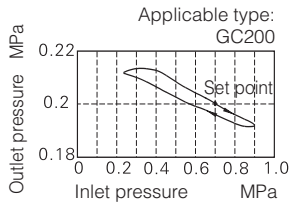


#### GC600

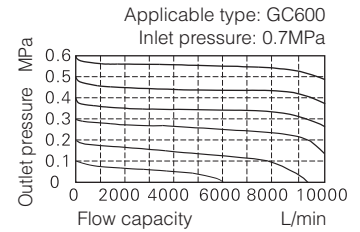
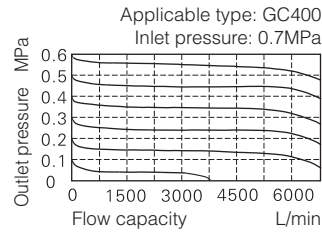
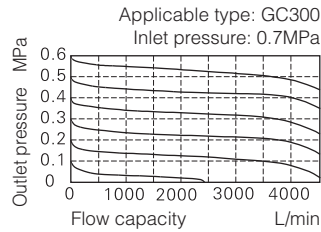
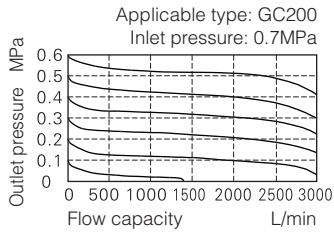


No.	Item
①	G series filter
②	Bracket
③	G series regulator
④	G series lubricator

### Pressure chart

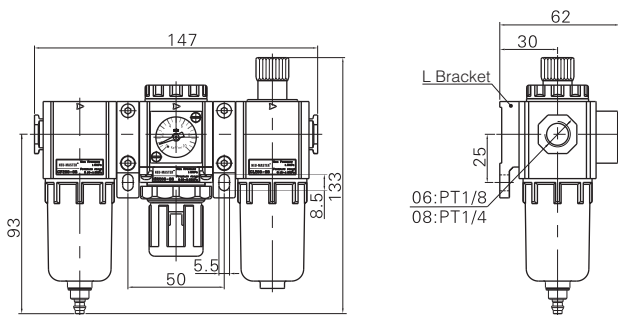


### Flow chart

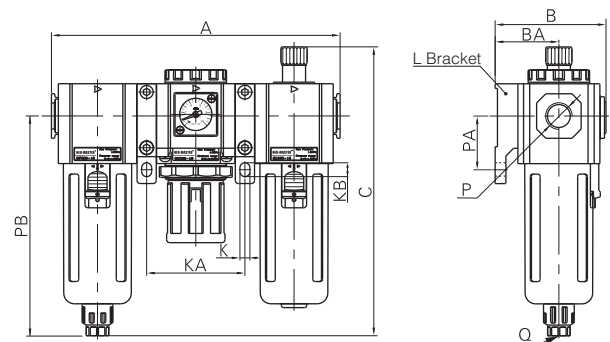


### Dimensions

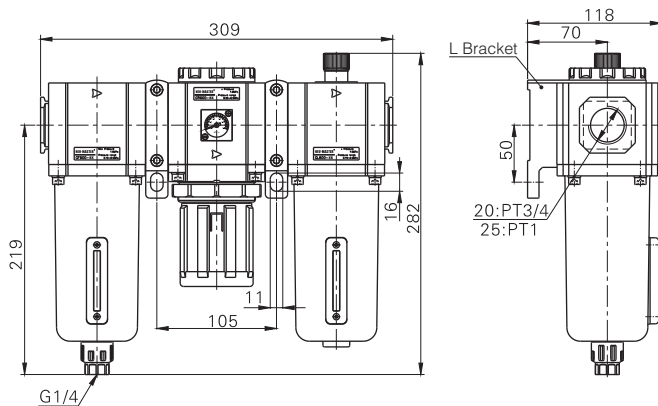
#### GC200



#### GC300\GC400



#### GC200



Model\Item	A	B	BA	C	K	KA	KB	P	PA	PB	Q
GC300-08	188	72	41.5	188	6.5	64	9	PT1/4	35	143	G1/8
GC300-10	188	72	41.5	188	6.5	64	9	PT3/8	35	143	G1/8
GC300-15	188	72	41.5	188	6.5	64	9	PT1/2	35	143	G1/8
GC400-10	248	89	50	216	8.6	84	12	PT3/8	40	166.5	G1/4
GC400-15	248	89	50	216	8.6	84	12	PT1/2	40	166.5	G1/4