



Specifications

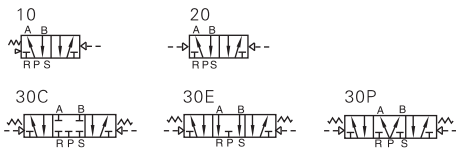
Model	4A110-M5 4A120-M5	4A130C-M5 4A130E-M5 4A130P-M5	4A110-06 4A120-06	4A130C-06 4A130E-06 4A130P-06
Fluid	Air(to be filtered by 40 μm filter element)			
Acting	Exterior control			
Port size ①	In=Out=M5		In=Out=1/8"	
Orifice size	5.5mm ² (Cv=0.31)	5.0mm ² (Cv=0.28)	12.0mm ² (Cv=0.67)	9.0mm ² (Cv=0.50)
Valve type	5 port 2 position	5 port 3 position	5 port 2 position	5 port 3 position
Operating pressure	0.15~0.8MPa(21~114psi)			
Proof pressure	1.2MPa(175psi)			
Temperature °C	-20~70			
Material of body	Aluminum alloy			
Lubrication ②	Not required			
Max. Frequency ③	5 cycle/sec	3 cycle/sec	5 cycle/sec	3 cycle/sec
Weight (g)	4A110-M5:85 4A120-M5:140	165	4A110-06:85 4A120-06:140	165

① PT thread, G thread and NPT thread are available.

② Once lubricated air is used, continue with same medium to optimise valve life span. Lubricants like ISO VG32 or equivalent are recommended.

③ The maximum actuation frequency is in the no-load state.

Symbol



Product feature

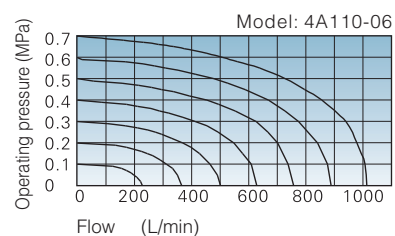
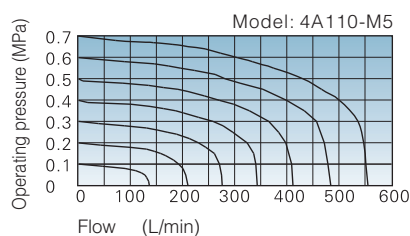
- Structure in sliding column mode: good tightness and sensitive reaction.
- Three position air valves have three kinds of central function for your choice.
- Double air control valves have memory function.
- Internal hole adopts special processing technology which has little attrition friction, low start pressure and long service life.
- No need to add oil for lubrication.
- Integrate with the manifold to save installation space.

Ordering code

Model	Code	Valve type	Port size	Thread type
4A	1	10	06	□
Air valve (5/2, 5/3 way)	1 100 Series	10 Single air control 5/2 way 20 Double air control 5/2 way 30C Double air control 5/3 way closed center 30E Double air control 5/3 way exhaust center 30P Double air control 5/3 way pressure center	M5 M5 06 1/8"	Port size Thread type 1/8" Blank: PT G: G T: NPT M5 No this code

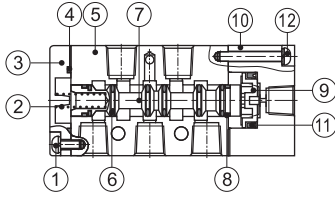
Please refer to 64 for manifold specification and the order way.

Flow chart

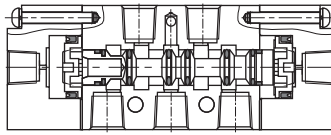


Inner structure

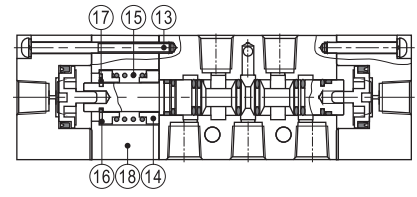
4A110



4A120



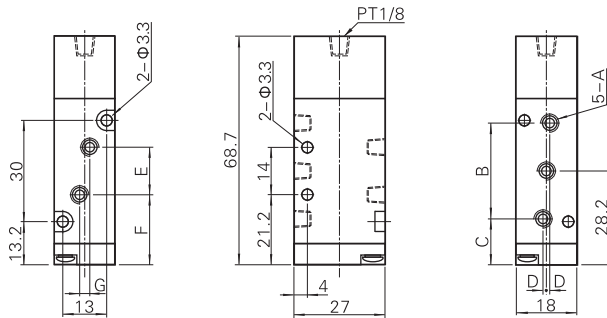
4A130C



No.	Item	No.	Item	No.	Item	No.	Item	No.	Item
1	Screw	5	Body	9	Piston	13	Screw	17	E Clip
2	Spring	6	O-ring	10	Pilot body	14	Spring holder	18	Side cover
3	Bottom cover	7	Spool	11	O-ring	15	Return Spring		
4	Bottom cover gasket	8	Wear ring	12	Screw	16	Spring holder		

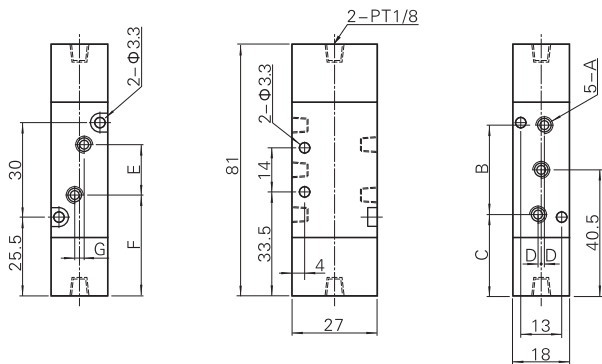
Dimensions

4A110



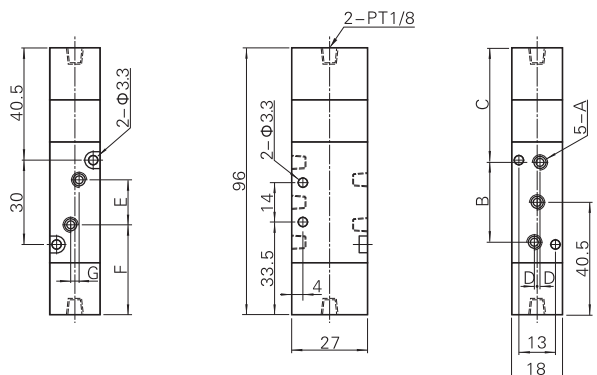
Model\Item	A	B	C	D	E	F	G
4A110-M5	M5×0.8	27	14.7	0	14	21.2	0
4A110-06	PT1/8	28	14.2	1	16	20.2	3

4A120

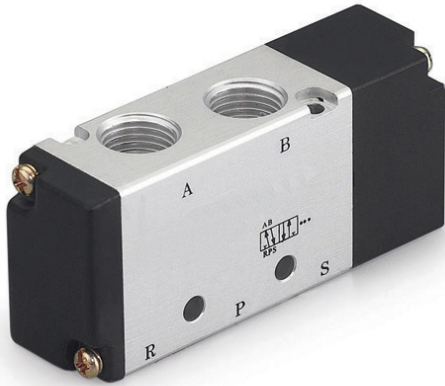


Model\Item	A	B	C	D	E	F	G
4A120-M5	M5×0.8	27	27	0	14	33.5	0
4A120-06	PT1/8	28	26.5	1	16	32.5	3

4A130



Model\Item	A	B	C	D	E	F	G
4A130-M5	M5×0.8	27	42	0	14	33.5	0
4A130-06	PT1/8	28	41.5	1	16	32.5	3



Specifications

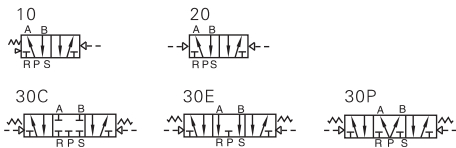
Model	4A210-06 4A220-06	4A230C-06 4A230E-06 4A230P-06	4A210-08 4A220-08	4A230C-08 4A230E-08 4A230P-08
Fluid	Air(to be filtered by 40 μm filter element)			
Acting	Exterior control			
Port size ①	In=Out=Exhaust=1/8"		In=Out=1/4" Exhaust=1/8"	
Orifice size	14.0mm ² (Cv=0.78)	12.0mm ² (Cv=0.67)	16.0mm ² (Cv=0.89)	12.0mm ² (Cv=0.67)
Valve type	5 port 2 position	5 port 3 position	5 port 2 position	5 port 3 position
Operating pressure	0.15~0.8MPa(21~114psi)			
Proof pressure	1.2MPa(175psi)			
Temperature °C	-20~70			
Material of body	Aluminum alloy			
Lubrication ②	Not required			
Max. Frequency ③	5 cycle/sec	3 cycle/sec	5 cycle/sec	3 cycle/sec
Weight (g)	4A210-06:185 4A220-06:285	365	4A210-08:185 4A220-08:285	365

① PT thread, G thread and NPT thread are available.

② Once lubricated air is used, continue with same medium to optimise valve life span. Lubricants like ISO VG32 or equivalent are recommended.

③ The maximum actuation frequency of no-load state.

Symbol



Product feature

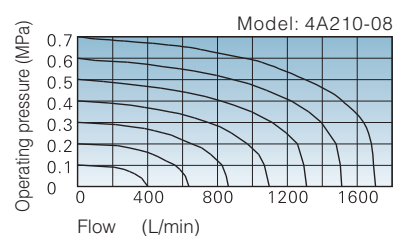
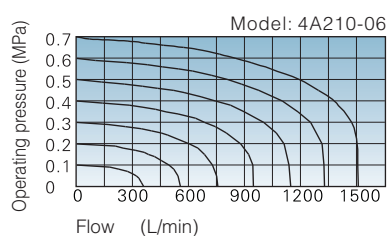
- Structure in sliding column mode: good tightness and sensitive reaction.
- Three position air valves have three kinds of central function for your choice.
- Double air control valves have memory function.
- Internal hole adopts special processing technology which has little attrition friction, low start pressure and long service life.
- No need to add oil for lubrication.
- Integrate with the manifold to save installation space.

Ordering code

Model	Code	Valve type	Port size	Thread type
4A	2	10	06	Blank
Air valve (5/2, 5/3 way)	200 Series	Single air control 5/2 way	1/8"	PT
		20	08	G
		Double air control 5/2 way	1/4"	G
		30C		T
		Double air control 5/3 way closed center		NPT
		30E		
		Double air control 5/3 way exhaust center		
		30P		
		Double air control 5/3 way pressure center		

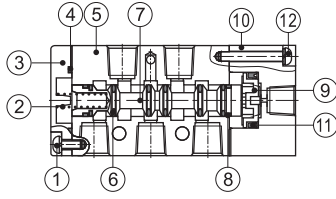
Please refer to 64 for manifold specification and the order way.

Flow chart

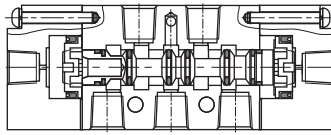


Inner structure

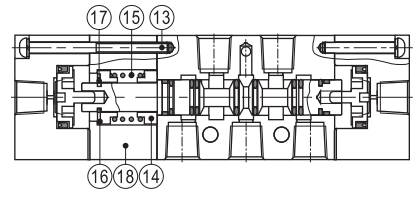
4A210



4A220



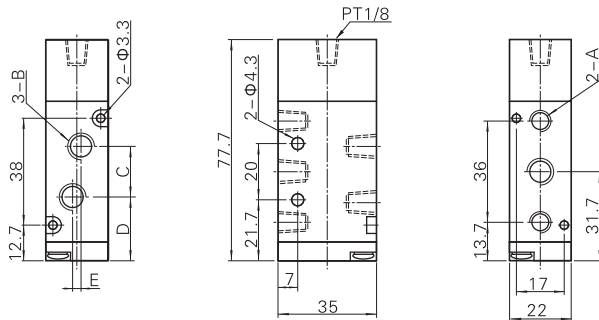
4A230C



No.	Item	No.	Item	No.	Item	No.	Item	No.	Item
1	Screw	5	Body	9	Piston	13	Screw	17	E Clip
2	Spring	6	O-ring	10	Pilot body	14	Spring holder	18	Side cover
3	Bottom cover	7	Spool	11	O-ring	15	Return Spring		
4	Bottom cover gasket	8	Wear ring	12	Screw	16	Spring holder		

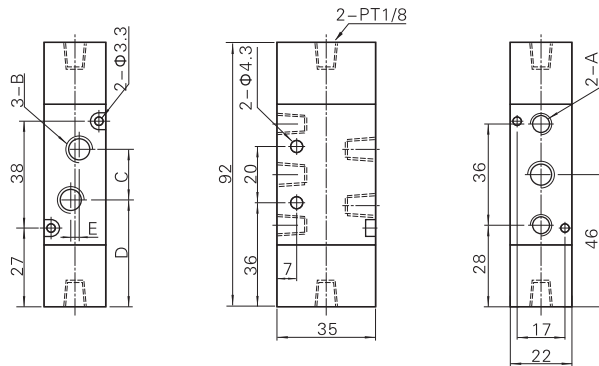
Dimensions

4A210



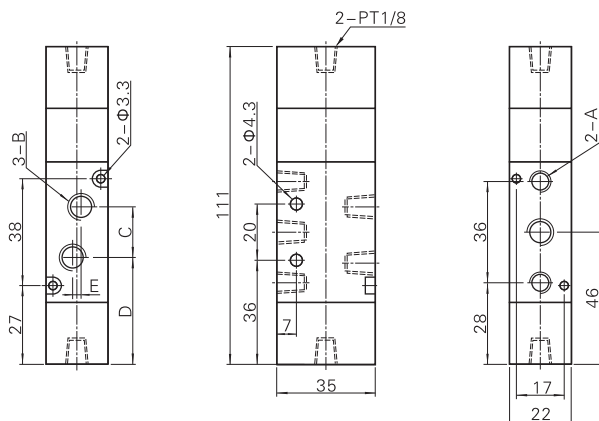
Model/Item	A	B	C	D	E
4A210-06	PT1/8	PT1/8	18	22.7	0
4A210-08	PT1/8	PT1/4	21	21.2	3

4A220

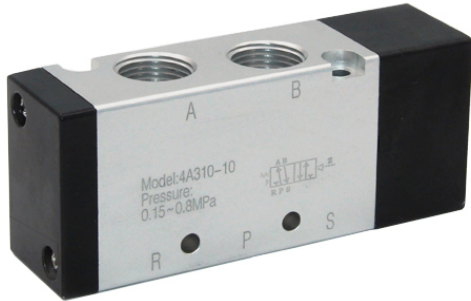


Model/Item	A	B	C	D	E
4A220-06	PT1/8	PT1/8	18	37	0
4A220-08	PT1/8	PT1/4	21	35.5	3

4A230C



Model/Item	A	B	C	D	E
4A230-06	PT1/8	PT1/8	18	37	0
4A230-08	PT1/8	PT1/4	21	35.5	3



Specifications

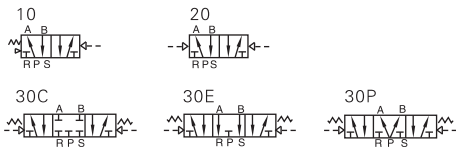
Model	4A310-08 4A320-08	4A330C-08 4A330E-08 4A330P-08	4A310-10 4A320-10	4A330C-10 4A330E-10 4A330P-10
Fluid	Air(to be filtered by 40 μm filter element)			
Acting	Exterior control			
Port size ①	In=Out=Exhaust=1/8"		In=Out=1/4" Exhaust=1/8"	
Orifice size	25.0mm ² (Cv=1.40)	18.0mm ² (Cv=1.00)	30.0mm ² (Cv=1.68)	18.0mm ² (Cv=1.00)
Valve type	5 port 2 position	5 port 3 position	5 port 2 position	5 port 3 position
Operating pressure	0.15~0.8MPa(21~114psi)			
Proof pressure	1.2MPa(175psi)			
Temperature °C	-20~70			
Material of body	Aluminum alloy			
Lubrication ②	Not required			
Max. Frequency ③	4 cycle/sec	3 cycle/sec	4 cycle/sec	3 cycle/sec
Weight (g)	4A310-08:275 4A320-08:365	505	4A310-10:275 4A320-10:365	505

① PT thread, G thread and NPT thread are available.

② Once lubricated air is used, continue with same medium to optimise valve life span. Lubricants like ISO VG32 or equivalent are recommended.

③ The maximum actuation frequency of no-load state.

Symbol



Product feature

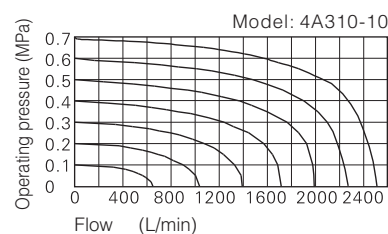
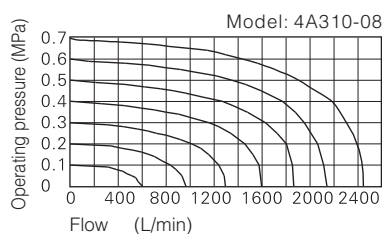
- Structure in sliding column mode: good tightness and sensitive reaction.
- Three position air valves have three kinds of central function for your choice.
- Double air control valves have memory function.
- Internal hole adopts special processing technology which has little attrition friction, low start pressure and long service life.
- No need to add oil for lubrication.
- Integrate with the manifold to save installation space.

Ordering code

Model	Code	Valve type	Port size	Thread type
4A	3	10	10	□
Air valve (5/2, 5/3 way)	3 300 Series	10 Single air control 5/2 way 20 Double air control 5/2 way 30C Double air control 5/3 way closed center 30E Double air control 5/3 way exhaust center 30P Double air control 5/3 way pressure center	08 1/4" 10 3/8"	Blank PT G G T NPT

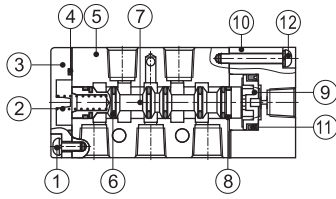
Please refer to 64 for manifold specification and the order way.

Flow chart

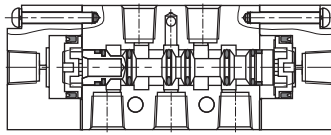


Inner structure

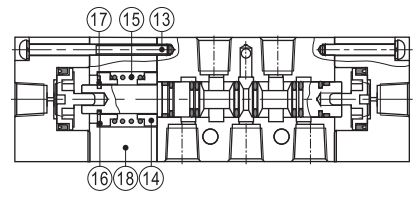
4A310



4A320



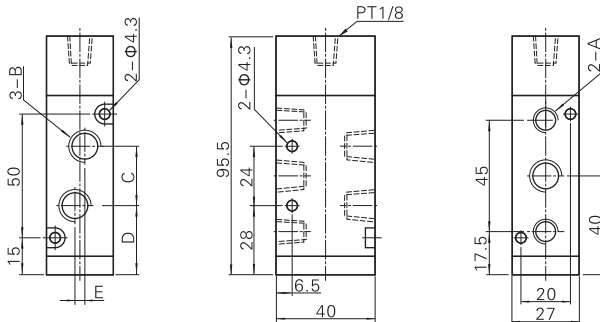
4A330C



No.	Item	No.	Item	No.	Item	No.	Item	No.	Item
1	Screw	5	Body	9	Piston	13	Screw	17	E Clip
2	Spring	6	O-ring	10	Pilot body	14	Spring holder	18	Side cover
3	Bottom cover	7	Spool	11	O-ring	15	Return Spring		
4	Bottom cover gasket	8	Wear ring	12	Screw	16	Spring holder		

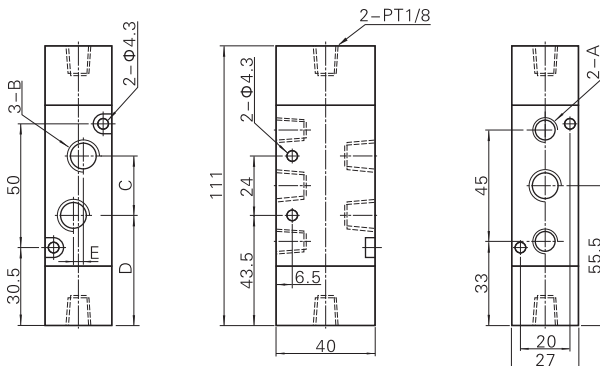
Dimensions

4A310



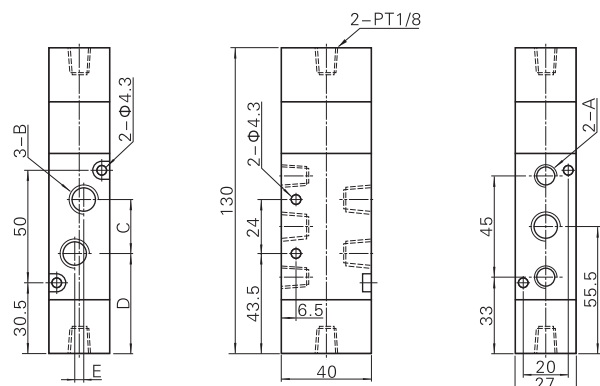
Model\Item	A	B	C	D	E
4A310-08	PT1/4	PT1/4	22	29	0
4A310-10	PT1/4	PT3/8	24	28	4

4A320

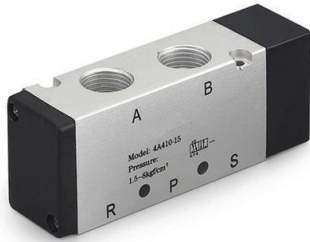


Model\Item	A	B	C	D	E
4A320-08	PT1/4	PT1/4	22	44.5	0
4A320-10	PT1/4	PT3/8	24	43.5	4

4A330C



Model\Item	A	B	C	D	E
4A330-08	PT1/4	PT1/4	22	44.5	0
4A330-10	PT1/4	PT3/8	24	43.5	4



Specifications

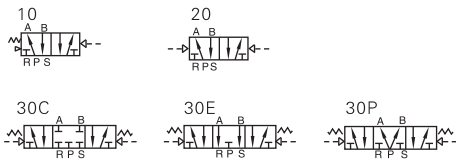
Model	4A410-15	4A420-15	4A430C-15	4A430E-15	4A430P-15
Fluid	Air(to be filtered by 40 μm filter element)				
Acting	Exterior control				
Port size ①	In=Out=Exhaust=1/2"				
Orifice size	5.5mm ² (Cv=2.79)		30.0mm ² (Cv=1.68)		
Valve type	5 port 2 position		5 port 3 position		
Operating pressure	0.15~0.8MPa(21~114psi)				
Proof pressure	1.2MPa(175psi)				
Temperature °C	-20~70				
Material of body	Aluminum alloy				
Lubrication ②	Not required				
Max. Frequency ③	3 cycle/sec				
Weight (g)	555	685	735		

① PT thread, G thread and NPT thread are available.

② Once lubricated air is used, continue with same medium to optimise valve life span. Lubricants like ISO VG32 or equivalent are recommended.

③ The maximum actuation frequency of no-load state.

Symbol



Product feature

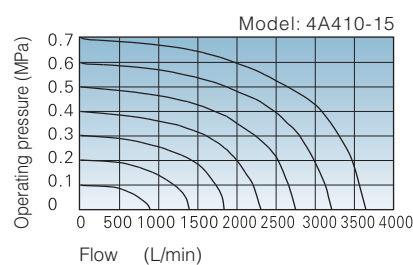
1. Structure in sliding column mode: good tightness and sensitive reaction.
2. Three position air valves have three kinds of central function for your choice.
3. Double air control valves have memory function.
4. Internal hole adopts special processing technology which has little attrition friction, low start pressure and long service life.
5. No need to add oil for lubrication.
6. Integrate with the manifold to save installation space.

Ordering code

Model	Code	Valve type	Port size	Thread type
4A	4	10	15	□
Air valve (5/2, 5/3 way)	400 Series	10 Single air control 5/2 way 20 Double air control 5/2 way 30C Double air control 5/3 way closed center 30E Double air control 5/3 way exhaust center 30P Double air control 5/3 way pressure center	15 1/2"	Blank PT G G T NPT

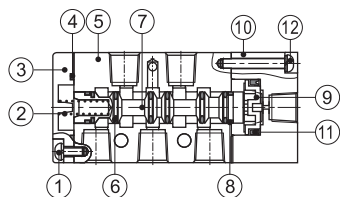
Please refer to 64 for manifold specification and the order way.

Flow chart

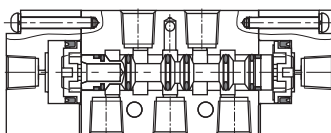


Inner structure

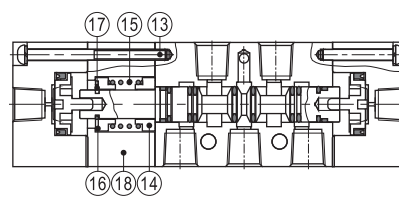
4A410



4A420



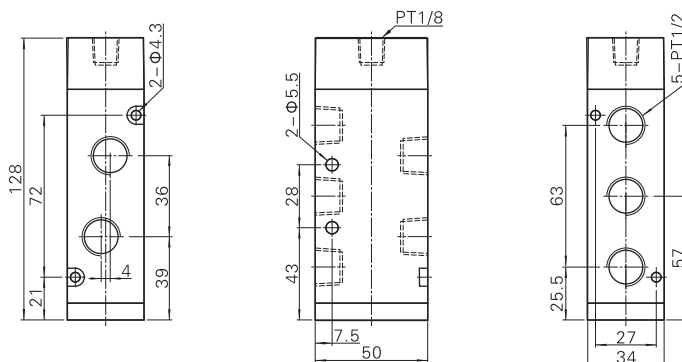
4A430C



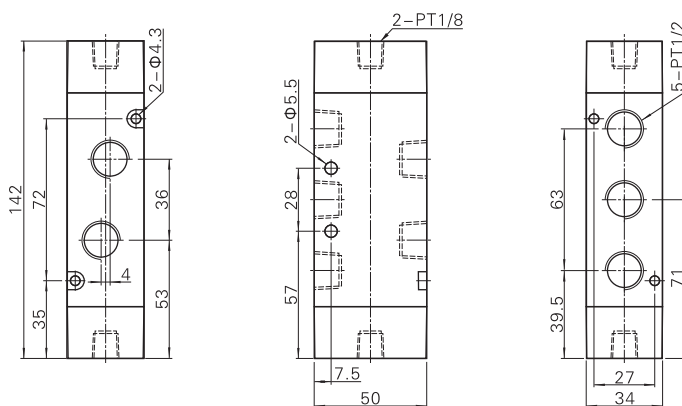
No.	Item	No.	Item	No.	Item	No.	Item	No.	Item
1	Screw	5	Body	9	Piston	13	Screw	17	E Clip
2	Spring	6	O-ring	10	Pilot body	14	Spring holder	18	Side cover
3	Bottom cover	7	Spool	11	O-ring	15	Return Spring		
4	Bottom cover gasket	8	Wear ring	12	Screw	16	Spring holder		

Dimensions

4A310



4A420



4A430C

