



Specifications

| Model/Specifications | DN15 | DN20 | DN25 | DN32 | DN40 | DN50 |
|---------------------------|--|-------|------|---------|---------|------|
| Control function | 2/2-way pneumatically operated drain valve | | | | | |
| Actuator material | PA actuator /S.S. actuator /aluminum actuator /pneumatic cylinder | | | | | |
| Valve body material | S.S304 | | | | | |
| Nominal pressure | PN16(body) | | | | | |
| Operating method | Plunger pilot | | | | | |
| Ambient and fluid | Water, alcohol, oils, fuels, hydraulic fluid, alkaline solutions, salt solution, organic solutions, hot water, steam | | | | | |
| Viscosity | Max.600mm ² /s | | | | | |
| Media temperature | -10~120°C | | | | | |
| Ambient temperature | PA: -10~60°C /Aluminum actuator: -10~140°C | | | | | |
| Installation | As required, preferably with actuator in upright position | | | | | |
| Control medium | Neutral gases, air | | | | | |
| Seat seal | PTFE/FPM/NBR | | | | | |
| Piston seal | FPM/NBR | | | | | |
| Mini.Pilot pressure (bar) | 4.5 | 4.5 | 4.5 | 5.0 | 5.2 | 4.5 |
| Port size | G1/2" | G3/4" | G1" | G1 1/4" | G1 1/2" | G2" |
| Nominal diameter (mm) | 13 | 18 | 24 | 31 | 35 | 45 |

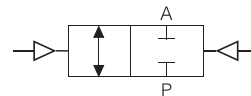
Product feature

2/2-way drain valve
Pneumatically operated, for medium up to +120°C, threaded Port and Tri-clamp connection DN 15-50

Symbol

Control function I

(double-acting actuator)



Ordering code

| DV100 | | P | 015 | |
|------------------------|-----------------------------|---|------------------|----------|
| Model | | | Nominal diameter | |
| DV100 | Drain valve threaded ends | | 15 | G 1/2" |
| DV200 | Drain valve tri-clamp ends | | 20 | G 3/4" |
| | | | 25 | G 1" |
| | | | 32 | G 1 1/4" |
| | | | 40 | G 1 1/2" |
| | | | 50 | G 2" |
| Actuator material code | | | | |
| P | PA Actuator | | | |
| S | S.S. Actuator | | | |
| A | Aluminum actuator | | | |
| C | Aluminum pneumatic cylinder | | | |

| NC | | S | 63mm | |
|------------------|----------------------------|-------------|---------------|--|
| Control function | | Acting type | | |
| NO | Normally open | S | Single acting | |
| NC | Normally closed (standard) | D | Double acting | |
| Blank | | | | |
| Body material | | | | |
| Blank | S.S 304 (standard) | | | |

Actuator size

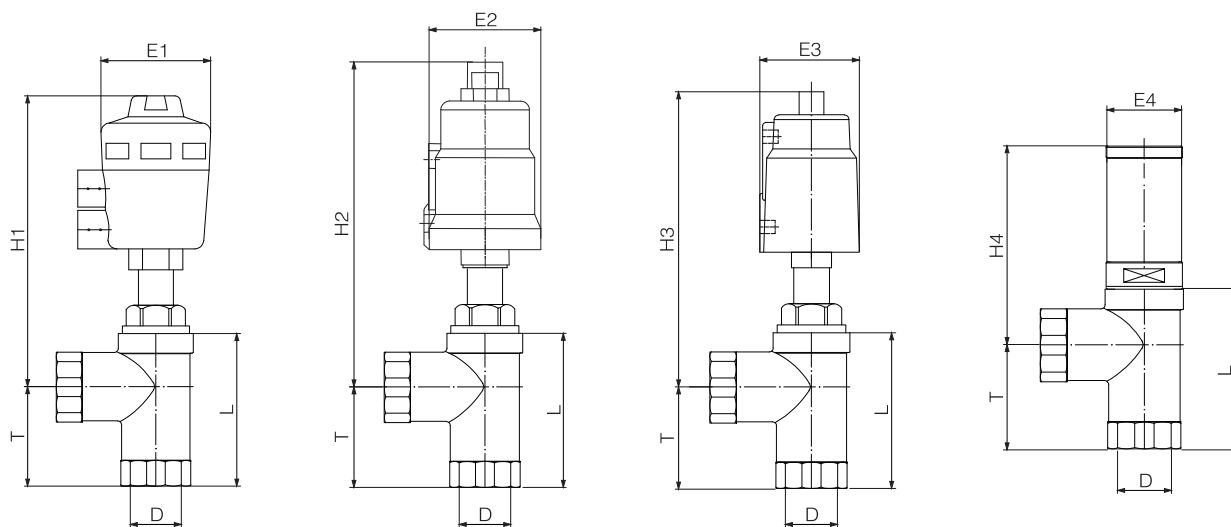
| Port size | Standard actuator size (mm) | | | |
|-----------|-----------------------------|------------|------------|----|
| | PA | S.S. | AL | C |
| DN15 | 40, 50 | 40, 50 | 40, 50 | 25 |
| DN20 | 40, 50, 63 | 50, 63, 90 | 50, 63, 80 | 25 |
| DN25 | 40, 50, 63 | 50, 63, 90 | 50, 63, 80 | 32 |
| DN32 | 63, 80 | 63, 90 | 63, 80 | 40 |
| DN40 | 63, 80 | 63, 90 | 63, 80 | 50 |
| DN50 | 63, 80 | 63, 90 | 63, 80 | 63 |

DV100/DV200 series plunger pilot drain valve is operated by a piston actuator, either single acting or double acting.

Actuators are made of four different materials, applicable to different ambient temperature; 2/2-way stainless steel valve with big flow capacity maintenance free, manual switching can be achieved conveniently.

Dimensions

2/2 Way drain valve (Threaded ends)



PA actuator drain valve

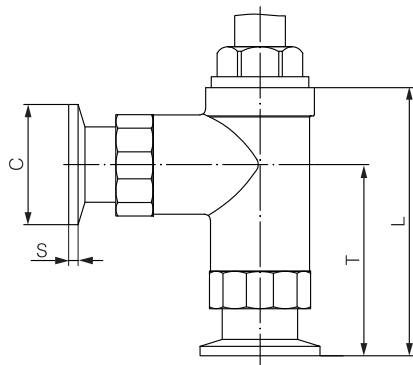
S.S. actuator drain valve

Aluminum actuator drain valve

Drain valve (mini cylinder type)

| Type | D | T | L | E1 | E2 | E3 | E4 | H1 | H2 | H3 | H4 |
|-------|---------|----|-----|----|----|----|----|-----|-----|-----|-----|
| DN 15 | G1/2" | 47 | 77 | 63 | 63 | 65 | 32 | 174 | 177 | 177 | 105 |
| DN 20 | G3/4" | 47 | 77 | 63 | 63 | 65 | 38 | 174 | 177 | 177 | 115 |
| DN 25 | G1" | 55 | 89 | 63 | 63 | 65 | 46 | 177 | 180 | 180 | 130 |
| DN 32 | G1 1/4" | 55 | 89 | 80 | 76 | 77 | 56 | 216 | 215 | 210 | 135 |
| DN 40 | G1 1/2" | 76 | 117 | 80 | 76 | 77 | 56 | 223 | 222 | 217 | 143 |
| DN 50 | G2" | 76 | 133 | 80 | 76 | 77 | 69 | 239 | 238 | 233 | 165 |

2/2 Drain valve (Tri-clamp ends)



| Type | L | T | C | S |
|-------|-----|-----|------|-----|
| DN 15 | 97 | 67 | 50.5 | 3.5 |
| DN 20 | 97 | 67 | 50.5 | 3.5 |
| DN 25 | 109 | 75 | 50.5 | 3.5 |
| DN 32 | 112 | 78 | 50.5 | 4.5 |
| DN 40 | 140 | 99 | 64 | 4.5 |
| DN 50 | 160 | 103 | 64 | 4.5 |